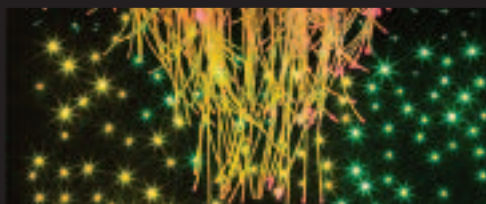
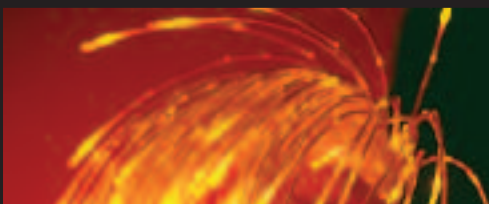
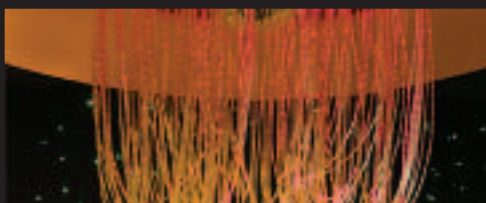
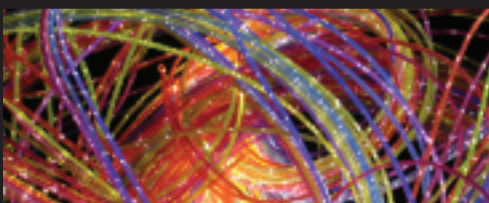
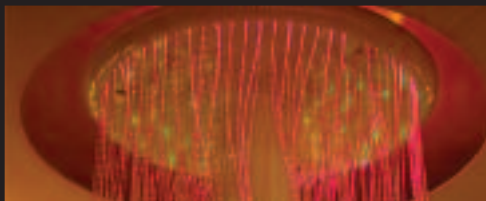


sensory lighting systems

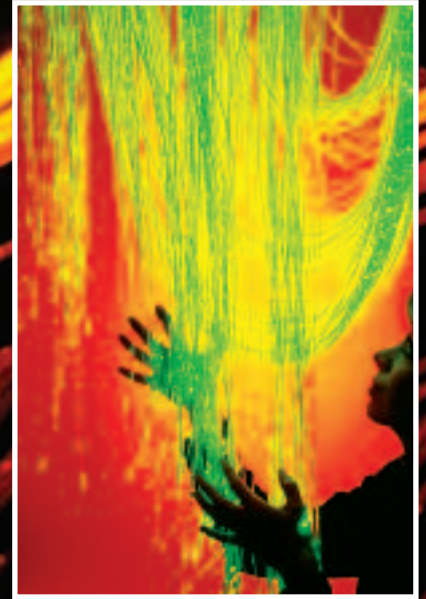


fiber optic sensory lighting

Universal Fiber Optics manufactures polymer sensory Sidesparkle fiber harnesses in-house. These harnesses consist of strands of polymer fiber enclosed in a clear sleeve. The PVC sheathing is certified as phthalate free. The fiber strands in these harnesses are cracked to let light escape from the sides.

When illuminated, the fiber produces a magical sparkling effect which can be colored with the use of an illuminator with an inbuilt color wheel.

These kits include a 75W tungsten halogen illuminator with a pre-installed six color colorwheel and a sensory Sidesparkle harness - the length and number of tails in the harness varies by kit part number.



kit contents

Our sensory lighting kits are supplied with the following items as standard...

75W illuminator (single feed to lamp & wheel)

colorwheel

sensory harness



Choice of black or white heavy duty illuminator



colorwheel colors

clear	
red	
magenta	
blue	
green	
yellow	



The harness is available in two sizes. Supersafe Sidesparkle which has an outer diameter of 2.6mm and Stariflex Sidesparkle with an outer diameter of 7mm. See page 14 for more information on these harnesses.

available as a complete kit or as harness only

These kits are ideal for use in home environments, as well as in sensory treatment and play rooms in schools and hospitals.

The absence of electricity in the fiber tails makes them completely safe to touch. With the use of polymer fiber – unlike the majority of kits on the market which use glass fiber – there is no risk of chewing through to glass fiber.

The kits can be installed in a permanent location or placed on the floor to play with.



see
page 14 for
separate
sensory harness
specifications

harness details

Fiber harness are made from a number of tails of fiber and are fitted with a standard 30mm common end

fiber optic tail quantities and lengths	complete kit ordering code	
	supersafe harness	stariflex harness
100 x 40 inches (1m)	SE1001U	STF1001U
100 x 79 inches (2m)	SE1002U	STF1002U
150 x 79 inches (2m)	SE1502U	STF1502U
100 x 118 inches (3m)	SE1003U	STF1003U
200 x 79 inches (2m)	SE2002U	STF2002U
150 x 118 inches (3m)	SE1503U	STF1503U
200 x 118 inches (3m)	SE2003U	STF2003U
200 x 158 inches (4m)	SE2004U	STF2004U

harness only ordering code	
supersafe harness	stariflex harness
SEN-100-1-CLU	STF-100-1-CLU
SEN-100-2-CLU	STF-100-2-CLU
SEN-150-2-CLU	STF-150-2-CLU
SEN-100-3-CLU	STF-100-3-CLU
SEN-200-2-CLU	STF-200-2-CLU
SEN-150-3-CLU	STF-150-3-CLU
SEN-200-3-CLU	STF-200-3-CLU
SEN-200-4-CLU	STF-200-4-CLU

custom options

In addition to the standard kits, we can create a customised solution to suit your requirements...



Optional twinkle wheel



Optional remote control system

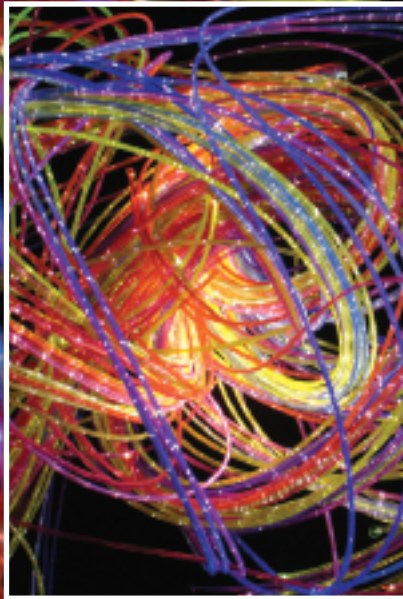
Harnesses	Custom tail lengths and number of tails
Illuminator	Upgrade to a more powerful 100W halogen illuminator or a add optional remote control
Colorwheel	The optional Varicolor wheel lets you personalise the colors in your colorwheel - you can choose up to six colors from a choice of sixteen

fiber optic uv reactive sensory lighting

Universal Fiber Optics manufactures UV sidesparkle fiber in-house. These harnesses consist of strands of polymer fiber enclosed in colored sleeves. The PVC sleeving is certified as phthalate free. The fiber strands in these harnesses are cracked to let light escape from the sides.

As well as producing the same sparkle effect as the standard sensory harnesses, the tails in these harnesses also glow dramatically under UV black light. Even without the addition of UV light, these harnesses in conjunction with the twinkle wheel can produce a stunning shimmering effect. A colorwheel is not necessary due to the harness being colored.

These kits include a 75W tungsten halogen illuminator with a pre-installed twinkle wheel and a UV sensory sidesparkle harness - the length and number of tails in the harness varies by kit part number.



kit contents

Our sensory lighting kits are supplied with the following items as standard

75w illuminator (single feed to lamp & wheel)

twinkle wheel

uv sensory harness



Choice of black or white heavy duty illuminator

standard harness colors

orange	
red	
purple	
blue	
green	
yellow	



The harness is available in two sizes. Supersafe sidesparkle which has an outer diameter of 2.6mm and Stariflex Sidesparkle with an outer diameter of 7mm. See page 14 for more information on these harnesses.

available as a complete kit or as harness only

These kits are ideal for use in home environments, as well as in sensory treatment and play rooms in schools and hospitals.

The absence of electricity in the fiber tails makes them completely safe to touch. With the use of polymer fiber – unlike the majority of kits on the market which mainly use glass fiber – there is no risk of chewing through to the glass fiber.

The kits can be installed in a permanent location or placed on the floor to play with.



harness details

Fiber harness are made from a number of tails of fiber and are fitted with a standard 30mm common end

Fiber optic tail quantities and lengths	Complete kit ordering code	
	UV supersafe harness	UV stariflex harness
100 x 40 inches (1m)	UV1001U	SUV1001U
100 x 79 inches (2m)	UV1002U	SUV1002U
150 x 79 inches (2m)	UV1502U	SUV1502U
100 x 118 inches (3m)	UV1003U	SUV1003U
200 x 79 inches (2m)	UV2002U	SUV2002U
150 x 118 inches (3m)	UV1503U	SUV1503U
200 x 118 inches (3m)	UV2003U	SUV2003U
200 x 158 inches (4m)	UV2004U	SUV2004U

Harness only ordering code	
UV supersafe harness	UV stariflex harness
SEN-100-1-UVU	STF-100-1-UVU
SEN-100-2-UVU	STF-100-2-UVU
SEN-150-2-UVU	STF-150-2-UVU
SEN-100-3-UVU	STF-100-3-UVU
SEN-200-2-UVU	STF-200-2-UVU
SEN-150-3-UVU	STF-150-3-UVU
SEN-200-3-UVU	STF-200-3-UVU
SEN-200-4-UVU	STF-200-4-UVU

custom options

In addition to the standard kits, we can create a customised solution to suit your requirements...



Optional color wheel



Optional remote control system

Harnesses	Custom tail lengths and number of tails
Illuminator	Upgrade to a more powerful 100W halogen illuminator or a add optional remote control
Colorwheel	The optional Varicolor wheel lets you personalise the colors in your colorwheel – you can choose up to six colors from a choice of sixteen

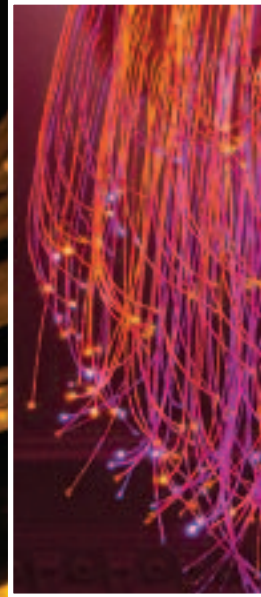
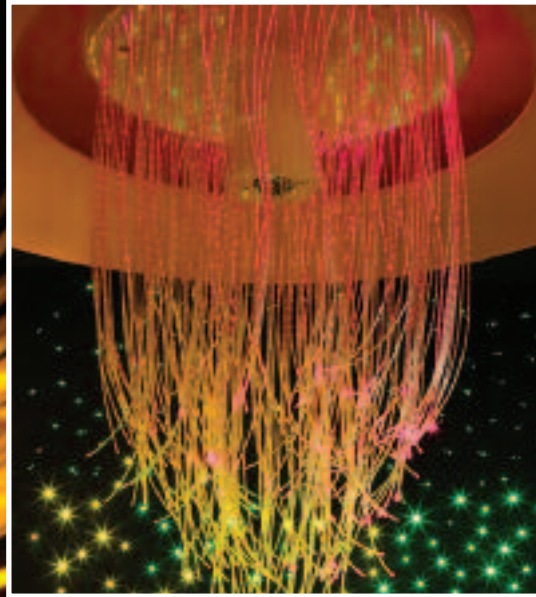
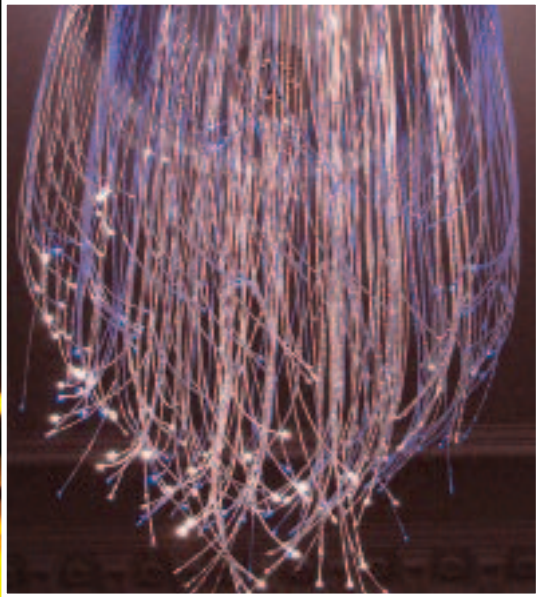
fiber optic solstice chandeliers

The Solstice range of fiber optic chandeliers from Unlimited Light are contemporary light sculptures which are designed to offer maximum impact in sensory and living spaces.

As standard, the Solstice is available in three different sizes and has two separate illuminator options – an integral illuminator, for use where access above the ceiling is not available and a remotely located illuminator which can be installed in the ceiling space above the chandelier. Both options allow full remote control of the chandelier.

The fiber optic tails in the chandelier are made from 3 strand polymer Sidesparkle fiber and are arranged in multiple rings that are staggered in length with maximum drops ranging between 40 inches (1m) and 158 inches (4m).

As well as the standard kits specified below, Universal Fiber Optics can manufacture these chandeliers in almost any size or shape and with tail lengths to suit your particular application.



base size options We offer 3 base sizes for ultimate flexibility...

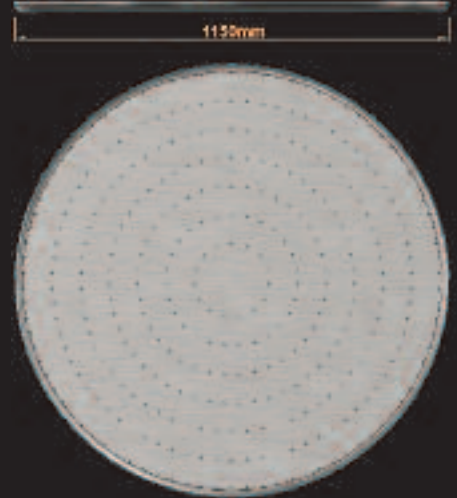
Mini Base



Midi Base



Maxi Base

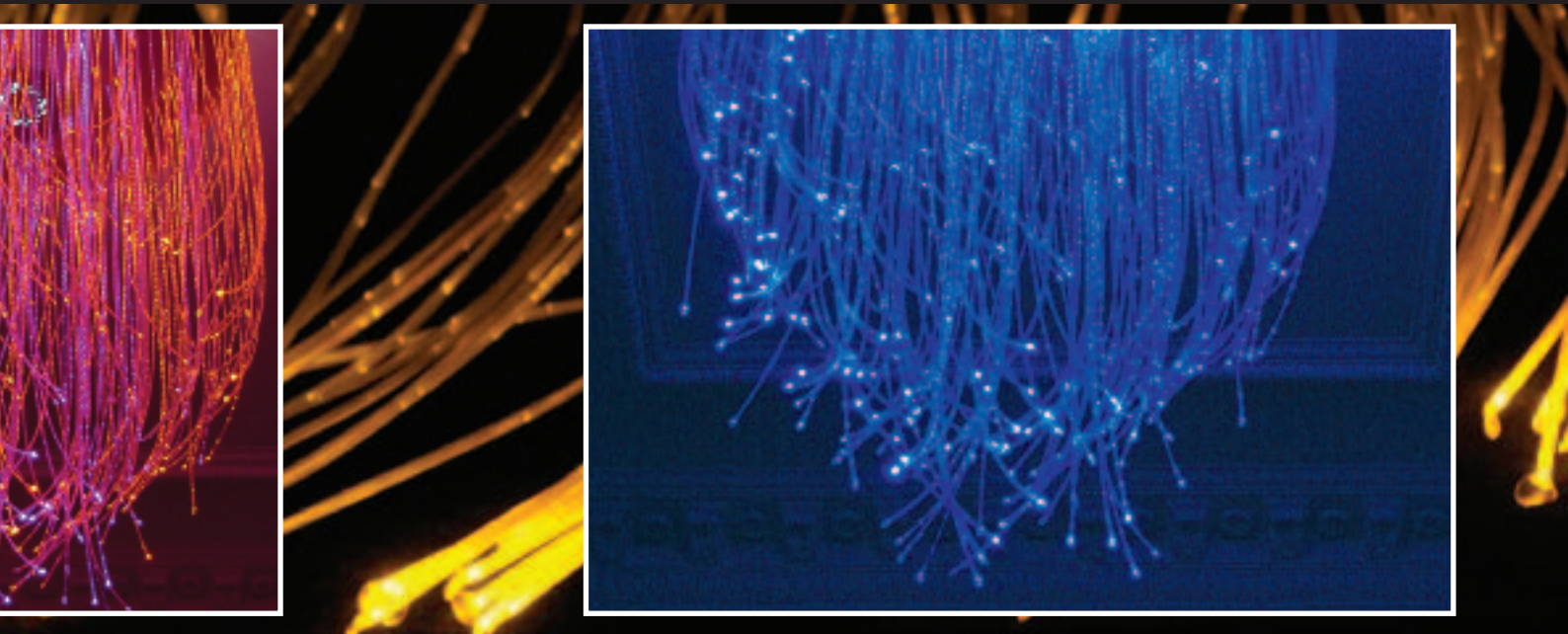


number of fiber optic tails in the chandelier

Base size	Ring 1 tails	Ring 2 tails	Ring 3 tails	Ring 4 tails	Ring 5 tails	Ring 6 tails	Ring 7 tails	Total tails
Mini	42	33	24	-	-	-	-	99
Midi	76	60	42	24	-	-	-	202
Maxi	84	73	65	48	38	30	16	354



Remote control fitted as standard to both illuminator types.



illuminator options

Choose from either an integral or an externally located illuminator...

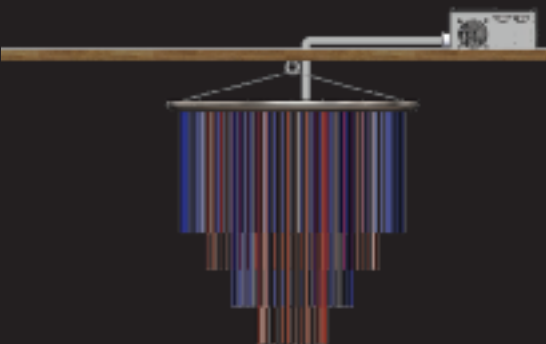
illuminator option 1



Integral 100W illuminator is pre-fitted to the chandelier base.

This illuminator makes it possible to install a Solstice chandelier even in rooms where there is no access above the ceiling.

illuminator option 2



A separate Triton 100W tungsten halogen illuminator

This illuminator is suitable for installation in the ceiling space above the chandelier. Tails lengths can be supplied to allow for the illuminator to be located up to 158 inches (4m) from the chandelier.

fiber optic star ceiling kits

Create a starry night in any room in the house by using our fiber optic star ceiling kit.

Consisting of mixed diameter fiber for a 'near & far' effect, each fiber optic star kit comes with small acrylic fittings for a neat finish in the ceiling or chosen location. Unlike other systems on the market, these fittings allow for the fiber to pass all the way through. This maintains the preferred intense star effect which is achieved when the fiber end is exposed, while covering up any ragged edges from the drill hole. Alternatively drill 1mm holes in the ceiling and just use the fibers on their own for an intense point of light.



kit contents

Star ceiling kits all come with following items as standard...

Model numbers: MS168, LS224 & XLS336 (75W illuminator)



Number of end fittings is dependent on kit



Model numbers: SS112 / SS112+1 (35W illuminator)



Optional remote control available on MS168, LS224 & XLS336 systems (see page 13)

Kit model no:	SS112U	SS112+1U	MS168U	LS224U	XLS336U
Illuminator type	35W tungsten halogen	35W tungsten halogen	75W tungsten halogen	75W tungsten halogen	75W tungsten halogen
Colorwheel	4 color plastic	4 color plastic	6 color glass	6 color glass	6 color glass
Number of tails	112 tails with lengths between 49in (1.25m) and 79in (2m)	112 tails with lengths between 89in (2.25m) and 118in (3m)	168 tails with lengths between 79in (2m) and 118in (3m)	224 tails with lengths between 40in (1m) and 177in (4.5m)	336 tails with lengths between 79in (2m) and 295in (7.5m)
End fittings	112 star fittings	112 star fittings	168 star fittings	224 star fittings	336 star fittings

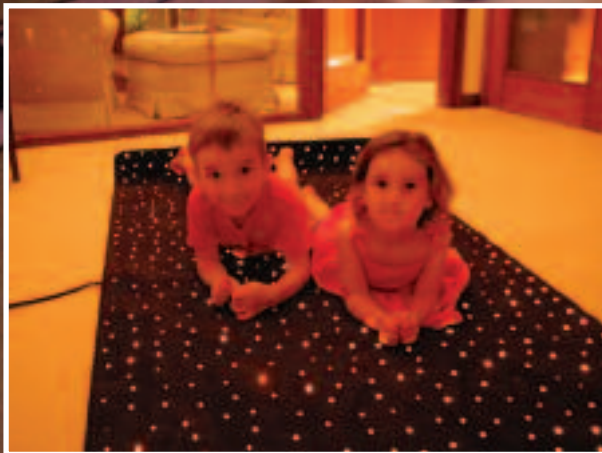
star carpets available as a complete kit or with carpet only

This range of high quality floor carpets have optical fiber woven into the pile.

A powerful 75W tungsten halogen illuminator with factory fitted 6 color colorwheel provides a stunning shimmering effect of constantly changing colors.

The star carpet can be used on top of existing flooring or can be attached to a wall.

Please note that the carpet should not be used in areas where heavy wear is likely, such as doorways, and it is not suitable for use in areas where heavy weights may be pushed over it.



kit contents

Star carpet kits all come with following items as standard...

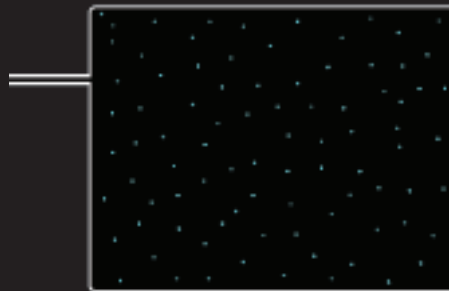
Black or white 75W illuminator



Six color colorwheel



Star carpet



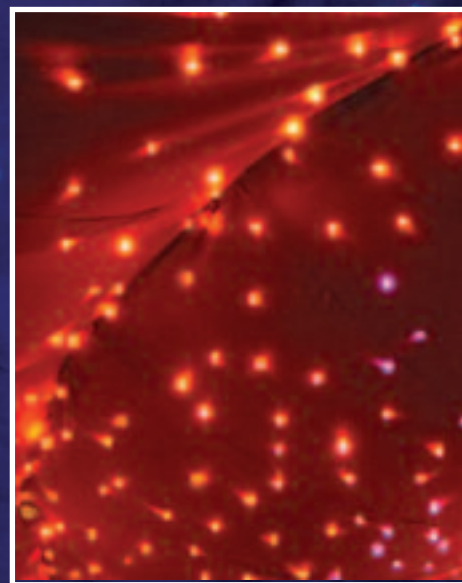
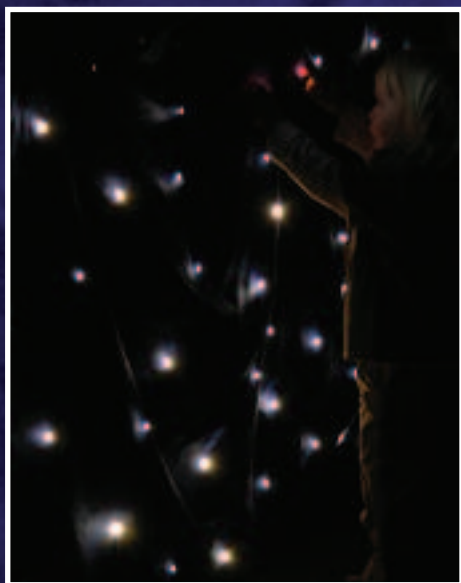
Kit model no:	STC1010U	STC1015U	STC1212U	STC1435U	STC2020U	STC3030U
Illuminator type	75W tungsten halogen	75W tungsten halogen	75W tungsten halogen	75W tungsten halogen	75W tungsten halogen	75W tungsten halogen
Colorwheel	6 color glass	6 color glass	6 color glass	6 color glass	6 color glass	6 color glass
Colors	High quality black, blue, red or white carpet, with fiber optic tails woven into the pile. other colors available at extra cost – please contact us for details.					
Tail lengths	40in (1m) as standard but can be customised to suit.					
Carpet size	40in (1m) x 40in (1m)	40in (1m) x 59in (1.5m)	49in (1.25m) x 49in (1.25m)	55in (1.4m) x 138in (3.5m)	79in (2m) x 79in (2m)	118in (3m) x 118in (3m)
Star carpet only ordering code	STCO1010U	STCO1015U	STCO1212U	STCO1435U	STCO2020U	STCO3030U

star cloths available as a complete kit or with star cloth only

Our range of fiber optic star cloths allow you to experience the beauty of the night sky indoors. The star cloth has ties on the top edge to allow it to be secured to a rail or other mounting system, as well a velcro mounting strips on the back.

Available in four different sizes and in three different colors, all variations can be purchased as part of a complete kit or separately for use with your own illuminator. The length of the fiber optic harness between the cloth and the illuminator connector can be specified on order.

If purchased as part of a complete kit, the star cloth is supplied with a 75w tungsten halogen illuminator with pre-installed six color colorwheel. An upgrade to a more powerful 100W illuminator is also available.



kit contents

Star cloth kits all come with following items as standard...

Black or white 75w illuminator

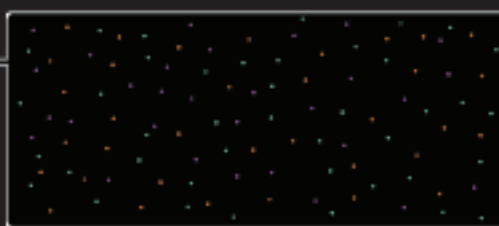


Or upgrade to a more powerful 100W illuminator

Six color colorwheel



Star cloth – choice of sizes – see table below



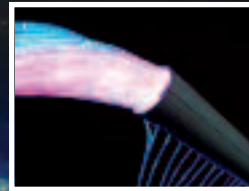
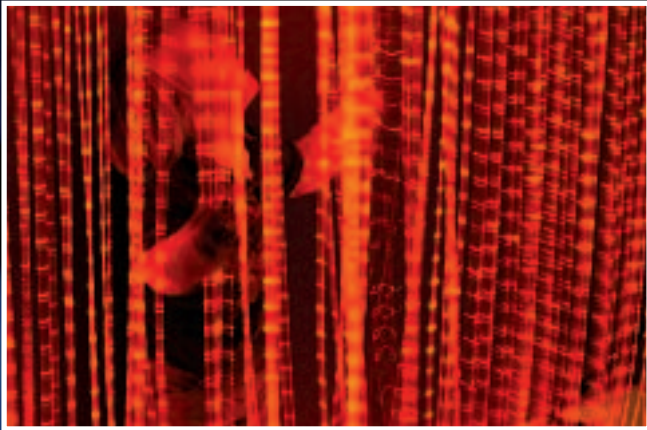
Kit model no:	SCLK2010U	SCLK2020U	SCLK3020U	SCLK4020U
Illuminator type	75W tungsten halogen	75W tungsten halogen	75W tungsten halogen	75W tungsten halogen
Colorwheel	6 color glass	6 color glass	6 color glass	6 color glass
Colors and material	High quality, flame retardant woollen serge material with tie-rings on top edge and velcro attached to backing. Available in black, blue or white.			
Tail lengths	The length of the fiber optic tails between the star cloth and illuminator can be specified at time of order.			
Cloth size	79in (2m) x 40in (1m)	79in (2m) x 79in (2m)	118in (3m) x 79in (2m)	158in (4m) x 79in (2m)
Cloth only ordering code	SCO2010U	SCO2020U	SCO3020U	SCO4020U

sensory wall tubes available as a complete kit or with tube only

An aluminum tube with long tails of sensory fiber cascading from its entire length.

Suitable for mounting on walls or above doors and windows, producing a shimmering curtain of light which is safe to play with, stand under and walk through.

The tube is finished in white and using the supplied color changing illuminator, the tails will either continually change between six different colors or they can be left to shine in one static color of your choice.



kit contents

Sensory wall tube kits all come with following items as standard...

Black or white 75w illuminator



Six color colorwheel

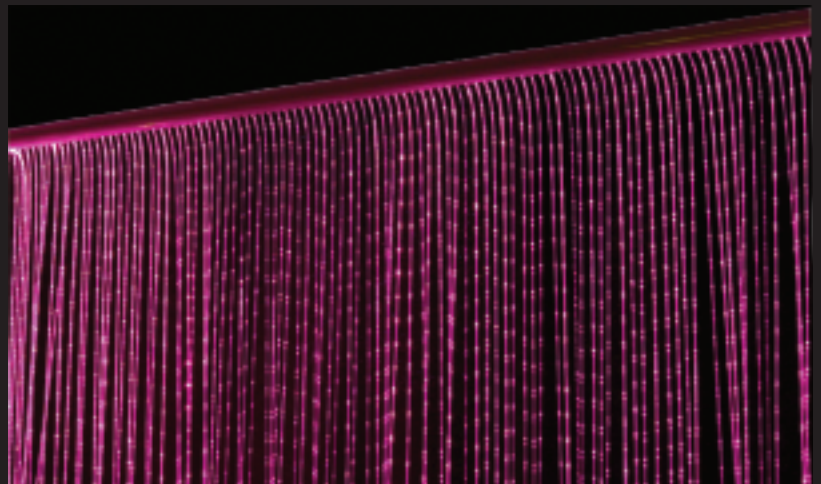


Sensory tube – choice of 40in (1m) or 59in (1.5m) length with fiber drops of 79in (2m).



Or upgrade to a more powerful 100W illuminator

Kit model no:	SWT1020U	SWT1520U
Illuminator type	75W tungsten halogen	75W tungsten halogen
Colorwheel	6 color glass	6 color glass
Tube length	40in (1m)	59in (1.5m)
Tail lengths	66 tails at 79in (2m)	99 tails at 79in (2m)
Tube only ordering code	SWTO1020U	SWTO1520U



fiber optic star ceiling rings

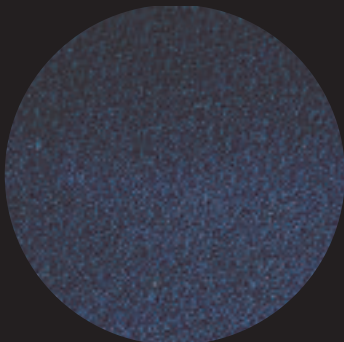
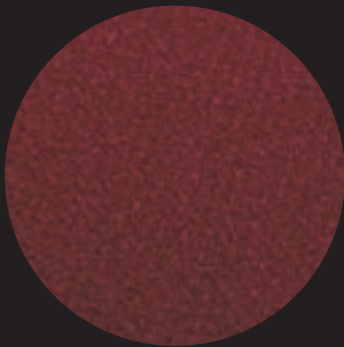
The fiber optic star cloth ceiling ring is an easy-install ceiling fixture which does not require access above the ceiling. A colored cloth is mounted on a 48 inch (1.22m) diameter aluminum ring which has four fixing points for attaching to the ceiling.

Powered by a small LED illuminator which can be wired directly to a standard ceiling light fixture, the ceiling ring is available in a choice of two colors – plum red or midnight blue – and contains 70 fiber optic 'stars'. The illuminator automatically scrolls through six vibrant colors – green, red, pink, blue, turquoise and yellow.

The star cloth ceiling ring is both decorative and therapeutic and is ideal for snoezelen rooms, nurseries and bedrooms as well as dentists and beauty therapists treatment rooms.



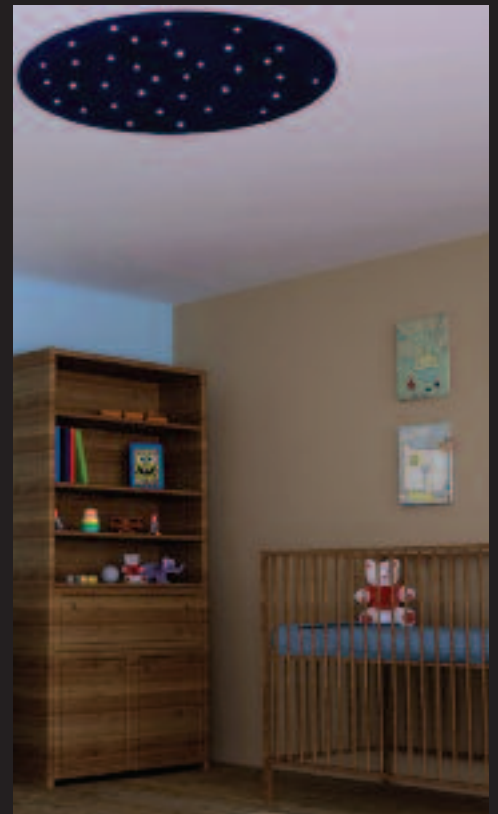
kit contents



The fiber optic star ceiling ring kit is supplied with a low voltage LED illuminator unit and you can choose from two colors of cloth – plum red or midnight blue.



Kit model no:	SCR70RU	SCR70BU
Illuminator type	Low voltage LED	Low voltage LED
Material color	Plum red	Midnight blue



remote control option

Our range of illuminators are all available with an optional RF remote control unit which operates at 433MHz.

Two models are available – the UIR1F, which is suitable for illuminators with a single electrical feed, and the UIR2F for illuminators with two separate feeds to allow control of the effects wheel motor independently.

Control is by a simple remote control keyfob. On model UIR1F, one button is used which switches all power to the illuminator on or off. Model UIR2F has two buttons which allow both the switching on/off of the illuminator as well as independently switching on or off the color wheel to allow it to be paused on a static color.

Note that remote control is provided as standard with our range of Solstice Chandeliers.



One connection required from power supply
Two connections between remote unit and illuminator (UIR2F separate feed model)
One connection between remote unit and illuminator (UIR1F single feed model)



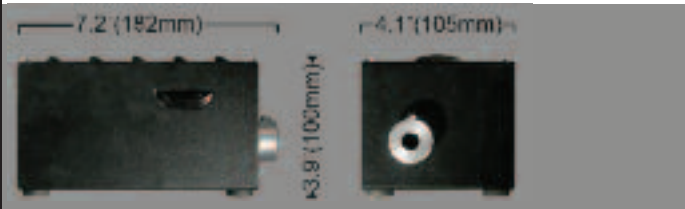
Remote control unit UIR2F



UIR2F keyfob switch

kit illuminator information

35W Tungsten Halogen Decorative



Order code	KL35WU		
Port connector	12mm		
Fiber type	Plastic		
Supply voltage	120VAC 60Hz		
Lamp power	35W		
Power cord	Non-removable		

75W/100W Triton Tungsten Halogen Decorative



Order code	TR75WU	TR100WU	
Port connector	30mm	30mm	
Fiber type	Plastic/glass	Plastic/glass	
Supply voltage	120VAC 60Hz	120VAC 60Hz	
Lamp power	75W	100W	
Power cord	IEC cable	IEC cable	

50W/75W Heavy Duty Tungsten Halogen Decorative

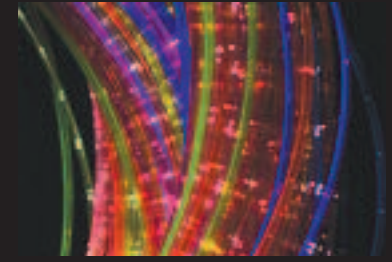


Order code	WHD50WU	WHD75WU	
Port connector	30mm	30mm	
Fiber type	Plastic/glass	Plastic/glass	
Supply voltage	120VAC 60Hz	120VAC 60Hz	
Lamp power	50W	75W	
Power cord	IEC cable	IEC cable	

harness specifications

polymer fiber technical specification

Item	Sidesparkle fiber specification	Stariflex fiber specification
Outer diameter	2.6mm	7mm
Core	3 x 0.75mm chipped fibers	12 x 1mm chipped fibers
Core material	Polymethyl methacrylate resin	Polymethyl methacrylate resin
Cladding material	Fluorinated polymer	Fluorinated polymer
Outer sheathing	Phthalate free PVC	Phthalate free PVC
Max. no. tails per harness	350	40
Max. run length	394in (10m) with either metal halide or tungsten halogen illuminator. metal halide gives brighter effect.	394in (10m) with either metal halide or tungsten halogen illuminator. metal halide gives brighter effect.



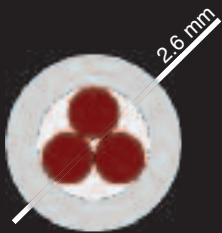
Both sizes of polymer fiber are optionally available with a UV reactive coating, colors available are red, green, yellow, orange, blue and purple.

polymer sidesparkle fiber

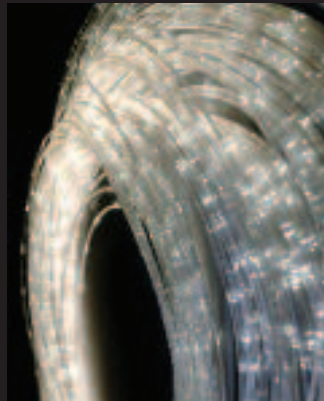
A decorative effect with the added safety of a polymer fiber core, ideal for multisensory environments, wall hanging and art installations. For indoor use only. Available with clear or colored UV reactive sheathing for use in sensory rooms with black light.

ordering codes

No. tails and sizes	Super safe clear	Super safe UV
100 tails at 40in (1m)	SEN-100-1-CL	SEN-100-1-UV
100 tails at 79in (2m)	SEN-100-2-CL	SEN-100-2-UV
100 tails at 118in (3m)	SEN-100-3-CL	SEN-100-3-UV
150 tails at 40in (1m)	SEN-150-1-CL	SEN-150-1-UV
150 tails at 79in (2m)	SEN-150-2-CL	SEN-150-2-UV
150 tails at 118in (3m)	SEN-150-3-CL	SEN-150-3-UV
200 tails at 40in (1m)	SEN-200-1-CL	SEN-200-1-UV
200 tails at 79in (2m)	SEN-200-2-CL	SEN-200-2-UV
200 tails at 118in (3m)	SEN-200-3-CL	SEN-200-3-UV



Outer sheathing OD: 2.6mm
Outer sheathing ID: 1.5mm
3 x \varnothing 0.75mm fiber tails

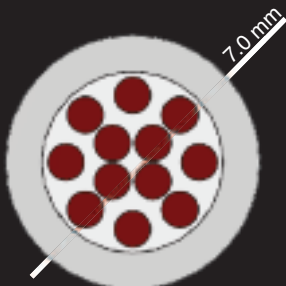


polymer stariflex fiber

As sidesparkle fiber but with a wider outer diameter and 12 fiber tails, Stariflex can be used in lengths of up to 315 in (8m) with either 100W halogen or 150W metal halide illuminators in areas with low ambient light. Up to 118 in (3m) lengths give the best effect.

ordering codes

No. tails and sizes	Stariflex clear harness	Stariflex UV harness
12 tails at 1m	STF-12-1-CL	STF-12-1-UV
12 tails at 2m	STF-12-2-CL	STF-12-2-UV
15 tails at 1m	STF-15-1-CL	STF-15-1-UV
15 tails at 2m	STF-15-2-CL	STF-15-2-UV
20 tails at 1m	STF-20-1-CL	STF-20-1-UV
20 tails at 2m	STF-20-2-CL	STF-20-2-UV



Outer sheathing OD: 7mm
Outer sheathing ID: 5mm
12 x \varnothing 1mm fiber tails



These harnesses are all supplied with standard 30mm common ends and heat sealed terminations. Other lengths are available to special order, please contact us to discuss your requirements.

We also have side sparkle fiber available in either standard or UV coated with a single core of 1mm polymer fiber – contact us for details of this.

cracked glass sideglow fiber

Cracked Glass Side Glow fiber consists of many fine strands of glass fiber in a clear PVC sheath. The glass is cracked at intervals along its length to allow light to escape. The numerous fine threads of glass also collect light from each other to give a different effect to the Polymer Side Sparkle or the Stariflex fibers.

Cracked Glass Side Glow fiber, which has been used in applications for last 20 years, has the advantage for decorative applications where it is to hang vertically. It has more weight than the Polymer Sidesparkle and therefore hangs straighter. It is however not as suited to applications where it may be played with. If the sheathing of the fiber is broken during handling or play, small glass fibers may escape. For applications where the fiber will be handled, we would always recommend the very safe Polymer Sidesparkle or Stariflex fiber.

Cracked Glass Side Glow is always supplied with the ends heat sealed.

cracked glass sideglow technical specification

Item	Cracked glass fiber specification
Outer diameter	2.2mm
Outer sheathing	Transparent PVC
Max. no. tails per harness	400
Max. run length	394in (10m) with metal halide illuminator 158in (4m) with tungsten halogen illuminator



Please contact our sales team for more information on glass sideglow harnesses.

we manufacture our own fiber

Unlike the majority of lighting companies selling fiber optic sensory lighting kits and products, here at Universal Fiber Optics, we manufacture our own side sparkle fiber harnesses.

Our sheathing material and fiber are certified as phthalate free. The fiber strands in these harnesses are cracked to let light escape from the sides.

Available in either clear or colored UV reactive sheathing, we can supply both ready terminated harnesses and complete rolls of fiber for use in your own applications.



Universal Fiber Optics are one of the only manufacturers of raw fiber for fiber optic lighting, and a major world manufacturer of complete systems and components.

We have extensive experience of providing fiber optic lighting for all applications.

We can also supply a diverse range of kits for self installation, from the best selling star ceiling kits, to the submersible spa and bath lighting kits. All our products are manufactured in-house to the highest possible standards.

Please visit our website for more information on our range of products and the services we can provide.

www.fiberopticlighting.com



6 Home Place
Coldstream
Berwickshire
United Kingdom
TD12 4DT

tel: +44 (0)1890 883416
fax: +44 (0)1890 883062
email: info@fiberopticlighting.com
www.fiberopticlighting.com