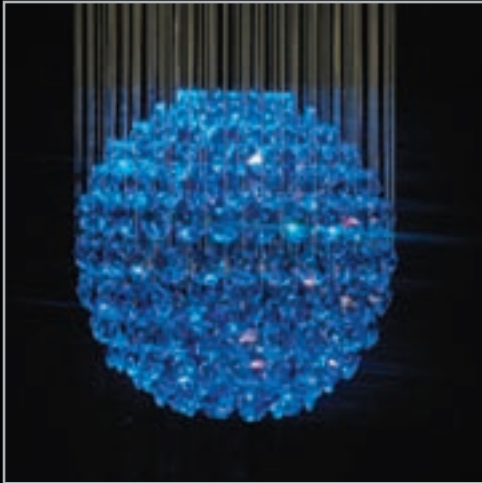


Unlimited Light for Unlimited Applications



Fibre Optic Lighting Kits

unlimited
Light

www.unlimitedlight.com

Bathrooms

Bedrooms

Hallways

Living Spaces

Home Cinemas

Patios

Decks

Saunas

Spas

Stairways

Gardens

Contents



Introduction.....3



Star Ceiling Kits.....4



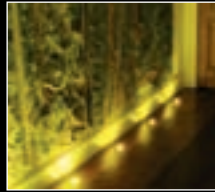
Crystal Chandelier.....6



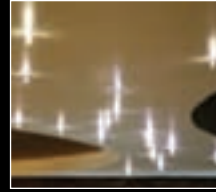
Solstice Chandelier.....7



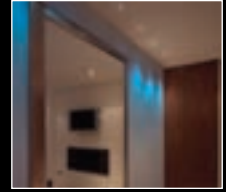
Floor Paver Kits.....8



Mini Floor Kits.....9



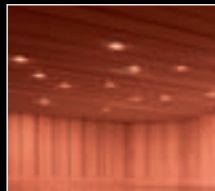
Crystal Ceiling Kits.....10



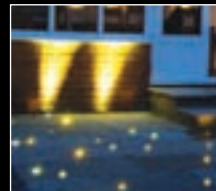
Downlight Kits.....11



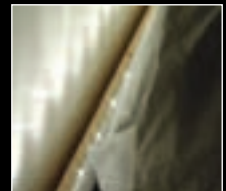
Spa and Bath Kits.....12



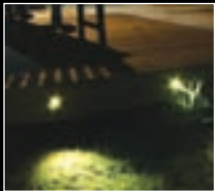
Sauna Kits.....13



Star Decking Kits.....14



Colourwand Kits.....19



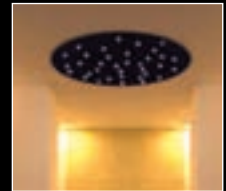
Garden Lighting Kits.....16



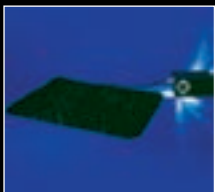
Bed Buddy Kits.....17



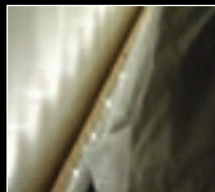
Sensory Lighting.....18



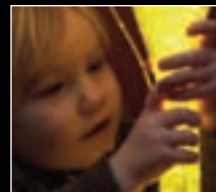
Star Ceiling Ring.....19



Star Carpet.....20



Star Cloth.....21



Sensory Wall Tubes.....22



Lightsource Information.....23



Accessories.....24



The Fibre Optic Lighting System...26



FAQs.....27

About Us

For over 10 years Unlimited Light have been supplying fibre optic lighting kits to customers worldwide, and have worked hard to build up a reputation as being the most reliable company in our field. We started in response to an increased interest in the use of fibre optics for domestic projects, and our wide range of standardised lighting kits is held in stock, keeping prices affordable. This brochure will tell you about all of our products, from our best-selling Star Ceiling kits, to our newest additions, Star Carpets, Star Cloths and Sensory Wall Tubes.

Ordinary household tools are all that is needed to install these kits and create stunning lighting effects in any part of your home or garden, from bathroom to bedroom, kitchen to patio, and complete instructions are included in every kit. For more information, visit our website at:

www.unlimitedlight.com

Please note that the information in this brochure is subject to change. Unlimited Light are constantly developing new products and improving existing ones, so always check our website for the most recent details.

The Advantages of Fibre Optic Lighting

With fibre optic lighting one bulb feeds multiple points of light, and in a standard kit one bulb may feed as many as 336 fibre optic tails (or up to 900 tails if you order a special kit). This means that once installed, our lighting kits are extremely easy to maintain – the lightsource can also be placed in a convenient location to change the bulb.

No heat or UV is emitted from fibre optic lighting, and the end fittings are completely cold and safe to touch, as there is no electricity running through them either.

Our lighting kits are very easy to install with conventional tools, and detailed instructions are supplied with each kit. Only one household electrical socket is required to power a lightsource (though often a second one is needed to power the colourwheel), and the end fittings only require holes to be cut in the floor, ceiling or other material in which they are to be installed.

A large amount of flexibility can be achieved with fibre optic lighting. Colourwheels within the lightsource make continuous colour changes easy to achieve, and twinkle effect wheels are perfect for creating a transfixing candlelight effect.

Colours

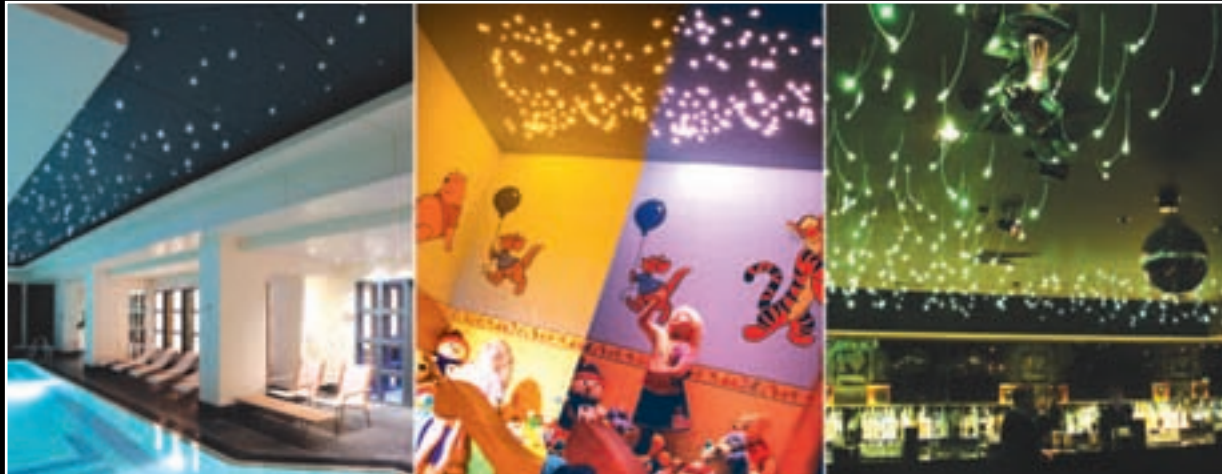
Colours are often used as an alternative medicine in the treatment of many illnesses, so when decorating the home or workplace it is important to remember that our mood can be affected by colours. Coloured fibre optic lighting is an excellent way of achieving this mood altering lighting. For maximum effect we recommend that the area where the lighting is to be installed is finished in a light or neutral colour.

Most of our kits come with a standard colourwheel, but our custom colourwheels are also available which allow you to make up your own colour combinations.

Some suggested uses of colour are:



Star Ceiling Kits



SS112 / SS112+1 / MS168 /
LS224 / XLS336

Standard Kit Contents

Contents for all kits detailed below, and the exact lengths of the tails are shown in the table at the bottom of page 5. The number in the square denotes how many tails of a certain length are in the harness. All kits come with full installation instructions and are supplied in protective packaging.

SS112 / SS112+1:

Harness with 112 tails, 1.25m–2.0m (in SS112), or 2.25m–3m (in SS112+1).
112 lenses are supplied with these kits.

Lightsource:

35W tungsten halogen lightsource with one plug. As standard this lightsource outputs continuously changing colours. The colourwheel can be removed to allow for static white light output.

Dimensions: (L)181mm x (W)100mm x (H)105mm
More lightsource information on page 23.

Electrical requirements:

1 x 240V household electrical supply

MS168:

Harness with 168 tails, 2.0m–3.0m.
168 lenses are supplied with this kit.

LS224:

Harness with 224 tails, 1.0m–4.5m.
224 lenses are supplied with this kit.

XLS336:

Harness with 336 tails, 2.0m–7.5m.
336 lenses are supplied with this kit.

Lightsource

50W (MS168) or 75W (LS224/XLS336) tungsten halogen lightsource with 2 plugs. One powers the lamp, the other switches the colourwheel on or off.
Dimensions: (L)286mm x (W)155mm x (H)119mm
For more information on the lightsource, see page 23.

Electrical requirements:

2 x 240V household electrical supply

Harnesses in all kits are made of mixed diameter fibre – 0.75mm and 1,0mm – to give a 'near and far' effect.

Colourwheel

For SS range, a five-segment colourwheel is supplied, which outputs continuously changing colours. For static white light, the colourwheel can be removed. For all others, a six-segment colourwheel is supplied, which can be left to rotate continuously through the colours or stopped on one for static light output. Optionally, a varicolour colourwheel can be purchased separately, allowing you to customise a six-segment colourwheel from a choice of 15 colours.

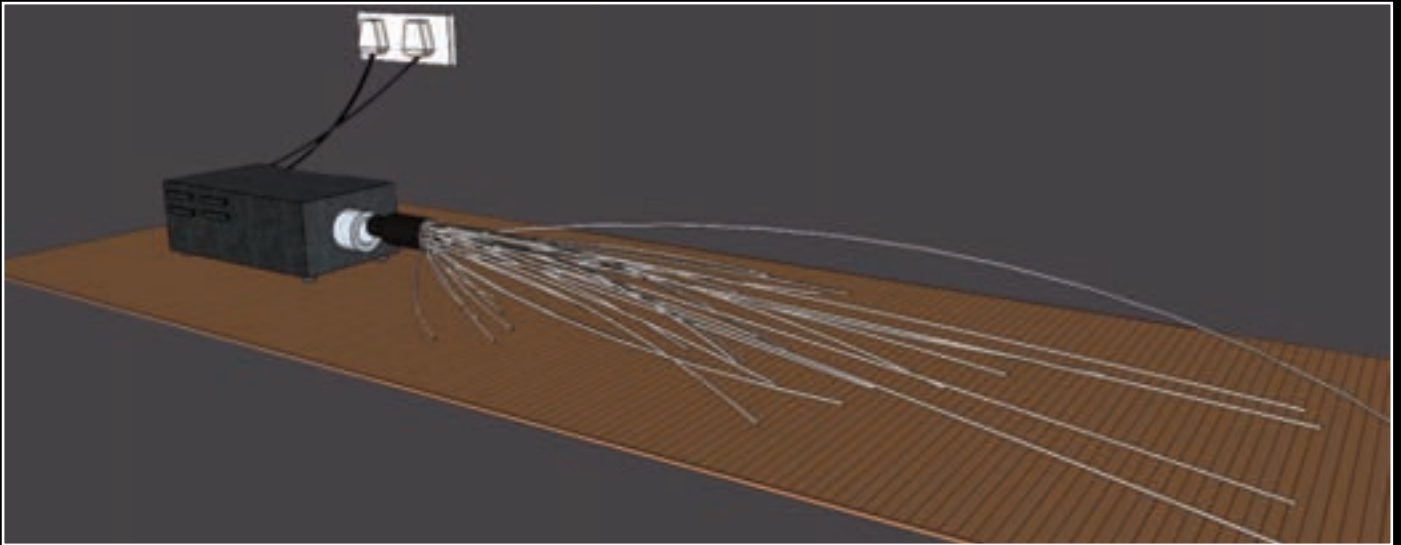
Our fibre optic star ceiling kits allow you to create a starry night in your bedroom, bathroom or any room in the house.

They use mixed diameter fibre to achieve a 'near and far' effect, with small acrylic fittings giving a neat finish in the ceiling or chosen material. These fittings allow for the fibre to pass all the way through, so, unlike other systems on the market, they maintain the bright star effect achieved when the fibre end is exposed, but still cover up any ragged edges from the drill hole. Alternatively, drill 1mm holes in the ceiling and just use the fibres on their own for an intense point of light. If you would like a star ceiling effect but have no access above your ceiling, turn to page 13 for the Unlimited Light star ceiling ring.

These fibre optic kits are usually installed in:

- * Ceilings – access is required from above, or fibres can be installed into a section of MDF or plasterboard in a new ceiling prior to it being elevated and lifted into place;
- * Drapes – pierce the material and apply silicone to the back;
- * Tiling – tails can be installed in grout between tiles.





As with many of the other Unlimited Light products, the Star Ceiling kit is installed above the ceiling. The diagram above shows an overview of how the installed kit is set up, and acts as a guide to how other kits are set up as well. The lightsource is placed in a remote location, somewhere it can be accessed. The fibres in the harness reach out from the lightsource (through the common end) and can be fed into the ceiling material, usually through an end fitting. However, the star ceiling kits also offer the option of feeding the bare fibres into the ceiling, giving a brighter, more intense star effect.

If lenses are being used, a 3mm hole is required to be drilled through the ceiling material. However, there is also the option of leaving the fibres bare, so for this a cutout of only 1mm is required.



The End Fittings

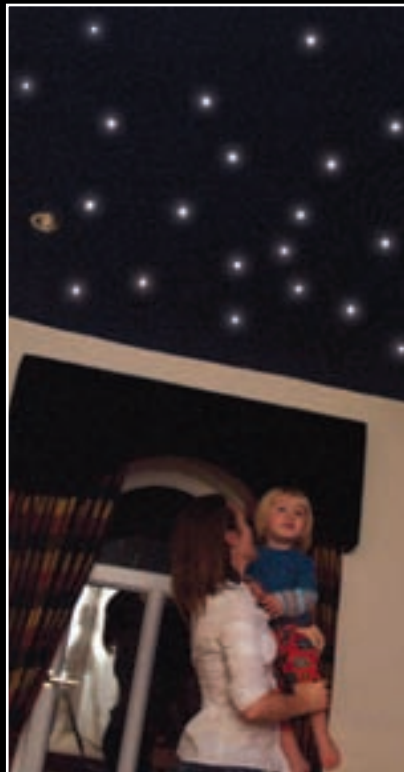
The Star Kits come with star lenses, which can be fitted onto the fibre ends for decorative effect, or can be used to hide unevenly drilled holes. A 3mm cutout is required when using these fittings, or 1mm for bare fibres.

See accessories on page 24 for drill bits.

Lightsource:

Either a 35W, 50W or 75W Tungsten Halogen lightsource is supplied depending upon which kit you buy. A six segment colourwheel is already installed in the 50W and 75W lightsources, and a five segment colourwheel is installed in the 35W lightsource.

For more information on these lightsources, please see page 23.



Product Number	Tail Lengths																											
	1.0	1.25	1.5	1.75	2.0	2.25	2.5	2.75	3.0	3.25	3.5	3.75	4.0	4.25	4.5	4.75	5.0	5.25	5.5	5.75	6.0	6.25	6.5	6.75	7.0	7.25	7.5	
SS112		28	28	28	28																							
SS112+1						28	28	28	28																			
MS168					56		56		56																			
LS224	28		28		28		28		28		28		28		28													
XLS336					28		28		28		28		28		28		28		28		28		28		28		28	

Crystal Chandelier



LV Crystal Chandeliers 500S / 750S / 1000S / 1500S / 1000L
FO Crystal Chandeliers 500S / 750S / 1000S / 1500S / 1000L

Standard Kit Contents

Lightsources for all kits are detailed at the bottom of the page. All kits come with full installation instructions and are supplied in protective packaging.

Low Voltage Crystal Chandeliers

LV Crystal Chandelier 500S

One 250mm diameter sphere, lit by a single low voltage lamp; total drop length is 500mm, including hanging rods, plus a 35mm ceiling upstand

LV Crystal Chandelier 750S

One 250mm diameter sphere, lit by a single low voltage lamp; total drop length is 750mm, including hanging rods, plus a 35mm ceiling upstand

LV Crystal Chandelier 1000S

Two 250mm diameter spheres, lit by dual low voltage lamps; total drop length is 1000mm, including hanging rods, plus a 35mm ceiling upstand

LV Crystal Chandelier 1500S

Three 250mm diameter spheres, lit by triple low voltage lamps; total drop length is 1500mm, including hanging rods, plus a 35mm ceiling upstand

LV Crystal Chandelier 1000L

One 500mm diameter sphere, lit by triple low voltage lamps; total drop length is 1000mm, including hanging rods, plus a 35mm ceiling upstand

The light output is white as standard, but one coloured filter can also be chosen from the chart at the bottom of the page.

Fibre Optic Crystal Chandeliers

FO Crystal Chandelier 500S

One 250mm diameter sphere, plus hanging rods, with a drop length of 500mm, and a 35mm ceiling upstand

FO Crystal Chandelier 750S

One 250mm diameter sphere, plus hanging rods, with a drop length of 750mm, and a 35mm ceiling upstand

FO Crystal Chandelier 1000S

Two 250mm diameter spheres, plus hanging rods, with a drop length of 1000mm, and a 35mm ceiling upstand

FO Crystal Chandelier 1500S

Three 250mm diameter spheres, plus hanging rods, with a drop length of 1500mm, and a 35mm ceiling upstand

FO Crystal Chandelier 1000L

One 500mm diameter sphere, plus hanging rods, with a drop length of 1000mm, and a 35mm ceiling upstand

Lightsource

100W tungsten halogen lightsource with 2 plugs. One powers the lamp, the other switches the colourwheel on or off.

Dimensions: (L)286mm x (W)155mm x (H)119mm
For more information on the lightsource, see page 23.

Colourwheel

Standard six segment colourwheel, which can be left to rotate slowly through the colours, or stopped on one colour for static light output. Optionally, a Varicolour colourwheel can be purchased separately, allowing you to customise a six-colour colourwheel from a choice of 15 colours.

Unlimited Light's new range of luxury crystal chandeliers is manufactured using the finest crystal parts. The dense arrangement of crystals exudes luxury even without the lights switched on, then when the lighting is switched on, a stunning pattern is created as the light hits the crystals from above.

Two sphere sizes are available, as well as multi-sphere options where two or three crystal spheres are hung one above the other, making these products the ultimate in luxurious lighting.

These chandeliers can be powered either by fibre optic light or, if access above the ceiling is not available, by traditional low voltage lamps. They are available in two sphere diameters – 250mm and 500mm, with the 250mm option allowing for multiple chandeliers to be hung underneath each other.



The diagram to the left shows how a crystal chandelier is assembled. Two crystals can be hung on each wire, except in the middle circle of wires (circle F in the diagram).

The first circle to be inserted (or the lowest and highest crystals) is A. To assemble the chandelier, all that is needed is to attach the crystals to the wire, then the wire to the base, then the base to the mounting plate.



Lightsource:

A 100W Tungsten Halogen lightsource is supplied with the fibre optic chandelier kits ONLY (the low voltage chandelier is powered internally), and this has a six segment colourwheel already installed in it. For more details please see page 23.



Fire	Orange	Golden Amber	Apricot	Canary
Green	Jade	Turquoise	Italian Blue	Brilliant Blue
Bright Blue	Congo	Violet	Magenta	Pink

Additional Information

The upstand comes in a chrome finish as standard, but can also be custom finished to suit your décor – please contact us to discuss your requirements.

All fibre optic crystal chandeliers are lit by a remotely located lightsource with one fibre optic harness. The tail measures 1m as standard, so the lightsource can be located up to 1m from the chandelier's position on the ceiling. However, a longer tail can be specified up to 6m in length, for an additional cost (see our website for details).

Solstice Chandelier

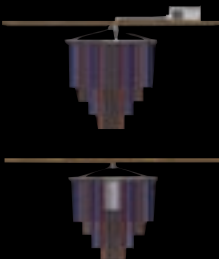
Micro / Midi / Maxi



Unlimited Light's Solstice Chandelier range is designed to make a lasting impression in the home. Not only are these revolutionary light sculptures unique and dramatic space fillers, they also boast therapeutic effects.

Three standard base sizes are available – micro, midi and maxi – with each option also allowing a choice of drop lengths, as well as either an integral lightsource (for use where there is no access above the ceiling), or an external 100W lightsource. Both lightsource choices in these chandeliers are fitted as standard with a 6-colour colourwheel, and as an option can also be fitted with our unique Varicolour colourwheel, so that you can choose your own combination of six colours, and interchange them at a later date.

The Lightsource



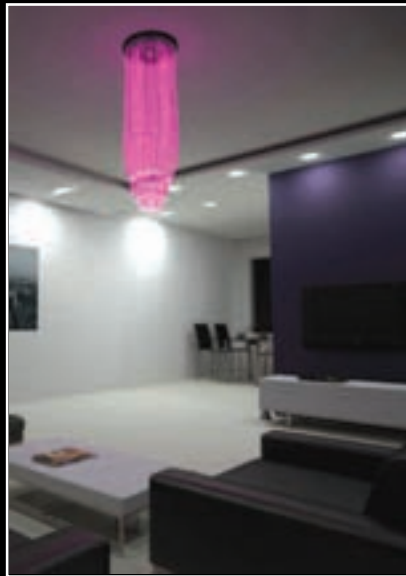
The top picture is of an external lightsource, where a 100W lightsource is located away from the chandelier.

The bottom picture is of the integral lightsource, which is located in the base of the chandelier itself. This lightsource is recommended for installation where there is no access above the ceiling.

The Remote Control



Both the external and the integral lightsource types are fitted with a remote control unit. The remote control itself has two buttons, one that switches the power on and off, and one that switches the colourwheel on and off.



Standard Kit Contents

All kits come with full installation instructions and are supplied in protective packaging.

The number of rings of fibres on the chandeliers depends on the size of the base. The Micro Solstice has a base width of 365mm and three rings, the Midi Solstice's base is 680mm wide and has four rings, and the Maxi Solstice's base is 1150mm and has seven rings. Table 1 below shows how many tails are held by each ring.

There are two options with regards to the lightsources for these chandeliers: integral and external.

A chandelier with an integral lightsource is ideal for areas where there is no access above the ceiling. Note that in models with an integral lightsource, the upstand has a collar in the centre to allow the lightsource to be mounted. The external lightsource is a 100W tungsten halogen lightsource, and more information is on page 23.

Each chandelier comes with a 100W tungsten halogen lamp, and a six segment colourwheel is pre-installed. The units are supplied with a remote control to switch the colourwheel on and off. The external lightsource option also allows for a Varicolour colourwheel to be fitted, so you can choose which colours it cycles through.

The fibres in the external lightsource option are supplied long enough to locate the lightsource directly above the chandelier, but fibre can also be specified up to 4.0m longer (at an additional cost, see our website for details).

The Solstice chandelier range is available with varying tail lengths. Table 2 below shows the lengths of each ring of tails, depending on the maximum length chosen. Ring 1 is the outermost ring, working inwards.

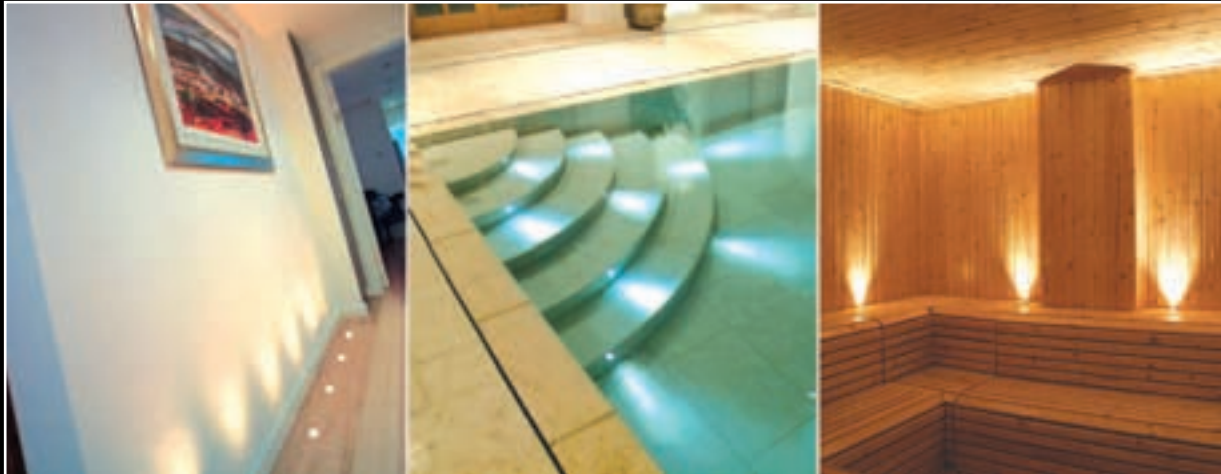
Table 1

Model	Base	Ring 1 tails	Ring 2 tails	Ring 3 tails	Ring 4 tails	Ring 5 tails	Ring 6 tails	Ring 7 tails
Maxi	1150 mm	84	73	65	48	38	30	14
Midi	680 mm	76	60	42	24			
Micro	365 mm	42	33	24				

Table 2

Model	Maximum Length	Ring 1	Ring 2	Ring 3	Ring 4	Ring 5	Ring 6	Ring 7
Maxi	4.0m	3.4m	3.5m	3.6m	3.7m	3.8m	3.9m	4.0m
	3.0m	2.4m	2.5m	2.6m	2.7m	2.8m	2.9m	3.0m
	2.0m	1.4m	1.5m	1.6m	1.7m	1.8m	1.9m	2.0m
	1.0m	0.4m	0.5m	0.6m	0.7m	0.8m	0.9m	2.0m
Midi	4.0m	3.7m	3.8m	3.9m	4.0m			
	3.0m	2.7m	2.8m	2.9m	3.0m			
	2.0m	1.7m	1.8m	1.9m	2.0m			
	1.0m	0.7m	0.8m	0.9m	1.0m			
Micro	4.0m	3.8m	3.9m	4.0m				
	3.0m	2.8m	2.9m	3.0m				
	2.0m	1.8m	1.9m	2.0m				
	1.0m	0.8m	0.9m	1.0m				

Floor Paver Kits



DK4 / DK6A / DK6B / DK8 /
DK8XL / DK10A / DK10B

Standard Kit Contents

All kits come with full installation instructions and are supplied in protective packaging. The exact lengths of the tails are shown in the table below. The number in the square denotes how many tails of a certain length are in each harness.

DK4R / DK4SQ:

Harness with four tails, 1.0m–4.0m
Four 47mm diameter stainless steel fittings supplied as standard

DK6AR / DK6ASQ:

Harness with six tails, 2.0m–3.0m
Six 47mm diameter stainless steel fittings supplied as standard

DK6BR / DK6BSQ:

Harness with six tails, 1.5m–4.0m
Six 47mm diameter stainless steel fittings supplied as standard

DK8R / DK8SQ:

Harness with eight fibre optic tails, 2.0m–5.0m
Eight 47mm diameter stainless steel fittings supplied as standard

DK8XLR / DK8XLSQ:

Harness with eight fibre optic tails, 4.0m–7.0m
Eight 47mm diameter stainless steel fittings supplied as standard

DK10AR / DK10ASQ:

Harness with ten fibre optic tails, 3.0m–7.0m
Ten 47mm diameter stainless steel fittings supplied as standard

DK10BR / DK10BSQ:

Harness with ten fibre optic tails, 3.0m–7.5m
Ten 47mm diameter stainless steel fittings supplied as standard

Lightsource

All paver kits come with a 100W Tungsten Halogen lightsource, with two plugs. One powers the lamp, the other switches the colourwheel on or off.
Dimensions: (L)286mm x (W)155mm x (H)119mm
For more information on the lightsource, see page 23.

Colourwheel

Standard six-segment colourwheel, which can be left to rotate slowly through the colours, or stopped on one for static light output. Optionally, a Varicolour colourwheel can be purchased separately, allowing you to customise a six-segment colourwheel from a choice of 15 colours.

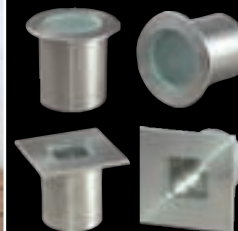
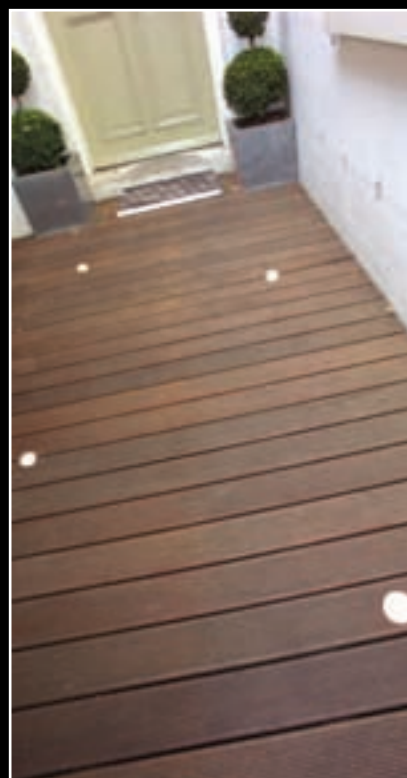
Electrical requirements

2 x 240V household electrical supplies

Our paver lighting kits are the perfect solution to floor level mood lighting, inside or out*. These lightings are unique in that the fittings stay cool and are safe to walk on, though of course they also allow for a dazzling range of lighting effects. The fittings of these lighting kits are manufactured from the highest quality polished stainless steel and glass and are designed to last a lifetime.

They can be installed in wooden floors, decking, paving, stair skirting, concrete, and more, and are typically used as marker lights for pathways or entrances, wall washing inside or out, uplighting columns or archways and mood lighting in any room in the house, including wet rooms and pool areas.

*Water resistant enclosure required if lightsource is to be located outside, see page 21 for details.



End Fittings

Round 47mm pavers come as standard with the kits marked 'R', square 38mm pavers come with the kits marked 'SQ'. For the round pavers, a 38mm cutout is required, for the square pavers a 28mm cutout is required.

See accessories on page 24 for drill bits.

Lightsource:

A 100W Tungsten Halogen lightsource is supplied with these kits, and this has a six segment colourwheel already installed in it.

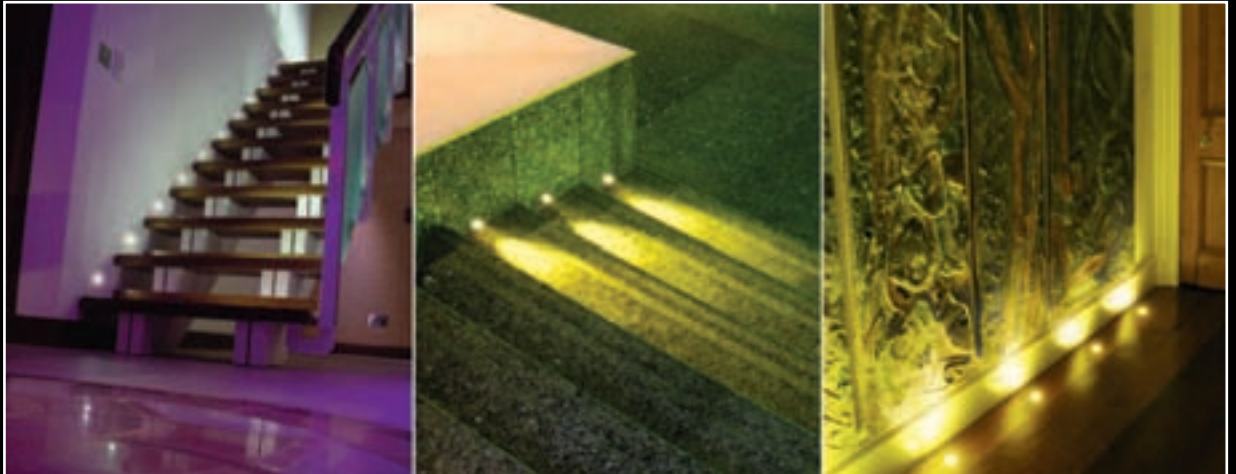


This kit also allows for a brighter 150W lightsource to be chosen, for more details please see page 23.

Product Number	Tail Lengths													
	1.0m	1.5m	2.0m	2.5m	3.0m	3.5m	4.0m	4.5m	5.0m	5.5m	6.0m	6.5m	7.0m	7.5m
DK4	1		1		1		1							
DK6A			3		3									
DK6B		1	1	1	1	1								
DK8			2		2		2		2					
DK8XL							2		2		2		2	
DK10A					2		2		2		2		2	
DK10B					1	1	1	1	1	1	1	1	1	1

Mini Floor Kits

MFK6 / MFK10



For the perfect solution to floor level mood lighting, inside or out*, our mini floor kits are ideal. The fittings stay cool and are safe to walk on, and of course they also allow for a range of stunning lighting effects.

The mini floor kit can be used in much the same way as the higher output paver kits, for interior or exterior applications. The same high quality glass and polished stainless steel are used for the fittings, only slightly smaller in size, making them ideal for applications where discretion is important.

Mini floor kits can create marker lights for stairs and hallways, decorative lighting for smaller rooms such as bathrooms and kitchens, and atmospheric feature lighting.

*Outdoor lighting requires a weatherproof enclosure – see page 24 for details.

Standard Kit Contents

All kits come with full installation instructions and are supplied in protective packaging. The exact lengths of the tails are shown in the table below. The number in the middle of the square denotes how many tails of a certain length are in the harness.

MFK6

Harness with six tails, 2.0–3.0m
Six 38mm diameter stainless steel round paver fittings are supplied with this kit.

MFK10

Harness with ten tails, 2.0–5.6m
Ten 38mm diameter stainless steel round paver fittings are supplied with this kit.

End Fittings

38mm diameter round stainless steel pavers are included as standard with this kit, and a 28mm cutout is required for this size of paver.



See accessories on page 24 for drill bits.

Lightsource:

A 75W Tungsten Halogen lightsource is supplied with these kits, and this has a six segment colourwheel already installed in it. For more details please see page 23.



Lightsource

75W Tungsten Halogen lightsource with two plugs. One powers the lamp, whilst the other switches the colourwheel on or off.
Dimensions: (L)286mm x (W) 155mm x (H)119mm
For more information on the lightsource, see page 23.

Colourwheel

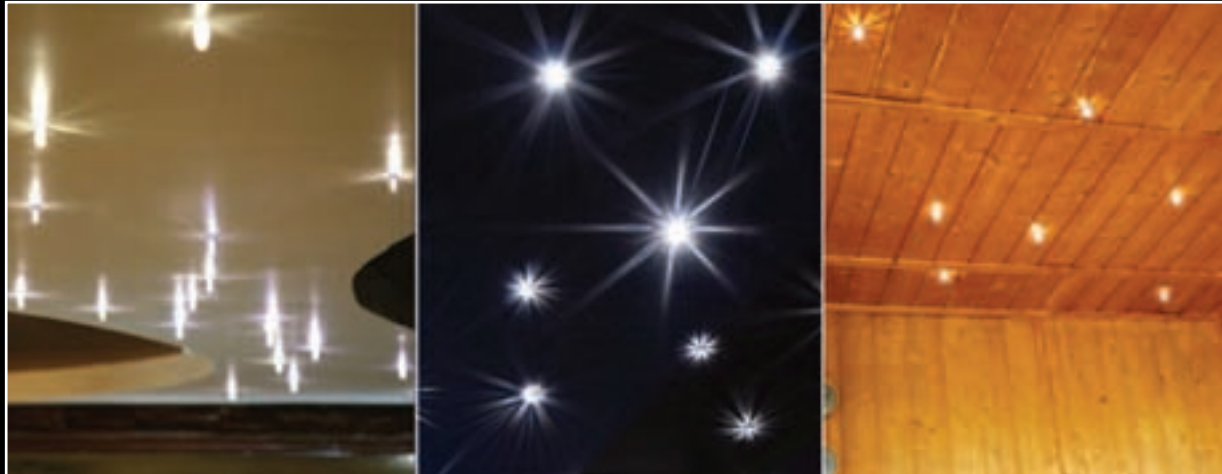
Standard six-segment colourwheel, which can be left to rotate slowly through the colours, or stopped on one for static light output. Optionally, a Varicolour colourwheel can be purchased separately, allowing you to customise a six-segment colourwheel from a choice of 15 colours.

Electrical Requirements

2 x 240V household electrical supplies.

Product Number \ Tail Length	Tail Length																			
	2.0m	2.2m	2.4m	2.6m	2.8m	3.0m	3.2m	3.4m	3.6m	3.8m	4.0m	4.2m	4.4m	4.6m	4.8m	5.0m	5.2m	5.4m	5.6m	
MFK6	3					3														
MFK10	1		1		1		1		1		1		1		1		1		1	

Crystal Ceiling Kits



CCK20 | CCK20XL / CCK30 /
CCK70

Standard Kit Contents

All kits come with full installation instructions and are supplied in protective packaging. The exact lengths of the tails are shown in the table below. The number in the square denotes how many tails of a certain length are in each harness.

CCK20

Harness with twenty tails, 1.5m–2.0m
Fourteen 9mm crystal fittings and six 14mm crystal fittings, with either chrome or gold finished flanges.

CCK20XL

Harness with twenty tails, 3.0m–4.0m
Fourteen 9mm and six 14mm crystal fittings, with either chrome or gold finished flanges.

CCK30

Harness with thirty tails, 2.5m–4.5m
Twenty-one 9mm and nine 14mm crystal fittings, with either chrome or gold finished flanges.

CCK70

Harness with seventy tails, 2.5m–6.5m
Forty-nine 9mm and Twenty-one 14mm crystal fittings, with either chrome or gold finished flanges.

Optional mounting sleeves are also available for all kits, see End Fittings to the right for more information.

Lightsource

All kits are illuminated by a 100W tungsten halogen lightsource, with two plugs. One plug powers the lamp, whilst the other switches the colourwheel on or off. Dimensions: (L)286mm x (W)155mm x (H)119mm. For more information on the lightsource, see page 23. A 150W lightsource upgrade is also available, see page 23 for details.

Colourwheel

Six segment standard colourwheel is also pre-installed into the lightsource. This can be left to rotate continuously, or stopped on one colour for static light output.

Electrical requirements

2 x 240V household electricity supplies.

The purest and most finely cut crystal parts are used to make these crystal fittings, and a regular and radiant pattern is reflected onto the surface in which they are installed. Two different sizes of crystal offer two different patterns, giving variation to the sparkle effect.

Though typically installed in bathrooms, saunas and steam rooms, installation in any room in the house is possible, with a luxurious feel and therapeutic benefits.

Standard kits come with colour change ability using our standard colourwheel. However, many of our customers interchange the colourwheel for a twinkle wheel – this creates an enchanting and soothing effect.



The End Fittings

The crystal fittings are made from the finest cut crystal parts, and the flanges are available in either a chrome or a gold finish. There are two sizes to give variation to the sparkle effect: 14x9mm, 6x14mm. A 10mm cutout is required for plasterboard, 11mm for wood.

For installation in insulated ceilings, mounting sleeves are available. These make it easier to run the fibre through the insulation. A 12mm cutout is required if mounting sleeves are used.

See accessories on page 24 for drill bits.

Lightsource:

A 100W Tungsten Halogen lightsource is supplied with these kits, and this has a six segment colourwheel already installed in it.

This kit also allows for a brighter 150W lightsource to be chosen, for more details please see page 23.

Product Number	Tail Lengths										
	1.5m	2.0m	2.5m	3.0m	3.5m	4.0m	4.5m	5.0m	5.5m	6.0m	6.5m
CCK20	10	10									
CCK20XL				10		10					
CCK30			10		10		10				
CCK70			20				20				30

Downlight Kits

CWD6A / CWD6B / CWD8 / CWD9



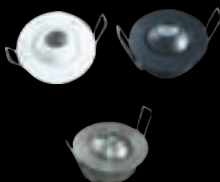
Colours influence the way we feel mentally and physically. Purple is a relaxing colour, ideal for preparing to sleep, but yellow is stimulating, waking us up. The colourwash downlight kit can continuously change the colour of your bathroom, bedroom or living room lighting.

White backdrops display the colour well, and using behind a white voile curtain creates a stunning effect. It also provides attractive bathroom lighting when used over showers or baths to change the colour of the water.

It is also possible to fix on white light with this kit, making it well suited to display lighting, for example within shelving or alcoves.

The End Fittings

Acrylic eyeball fittings in chrome, black or white come as standard with this kit, though these can be upgraded to stainless steel for an extra cost. A 40mm cutout is required for these fittings.



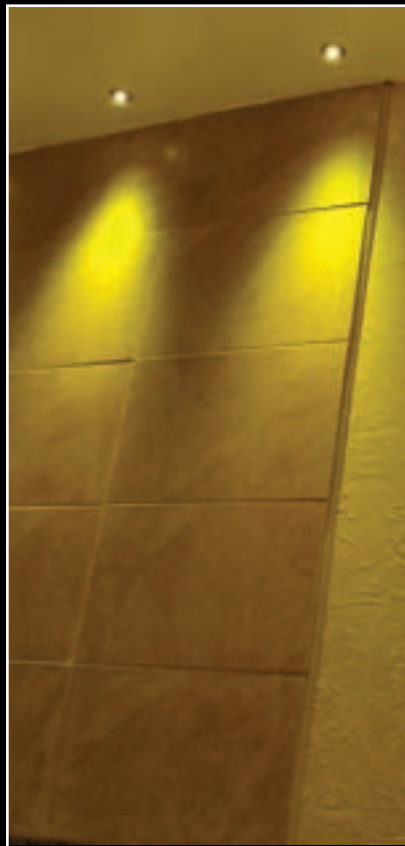
See accessories on page 24 for drill bits.

Lightsources:

A 100W Tungsten Halogen lightsource is supplied with these kits, and this has a six segment colourwheel already installed in it.



This kit also allows for a brighter 150W lightsource to be chosen, for more details please see page 23.



Standard Kit Contents

All kits come with full installation instructions and are supplied in protective packaging. The exact lengths of the tails are shown in the table below. The number in the square denotes how many tails of a certain length are in each harness.

CWD6A

Harness with six tails, 2.0m–3.0m

Six acrylic eyeball fittings are supplied with this kit, with either a chrome, black or white finish.

CWD6B

Harness with six tails, 1.5m–4.0m

Six acrylic eyeball fittings are supplied with this kit, with either a chrome, black or white finish.

CWD8

Harness with eight tails, 2.0m–5.0m

Eight acrylic eyeball fittings are supplied with this kit, with either a chrome, black or white finish.

CWD9

Harness with nine tails, 3.0m–7.0m

Nine acrylic eyeball fittings are supplied with this kit, with either a chrome, black or white finish.

Fittings Upgrade

Acrylic eyeball fittings can be optionally changed for stainless steel eyeballs, at an extra cost per fitting (see website for details).

Lightsources

All kits are supplied with a 100W tungsten halogen lightsource, with two plugs. One powers the lamp, whilst the other switches the colourwheel on or off. For more information on the lightsource, see page 23. Dimensions: (L)286mm x (W)155mm x (H)119mm.

Colourwheel

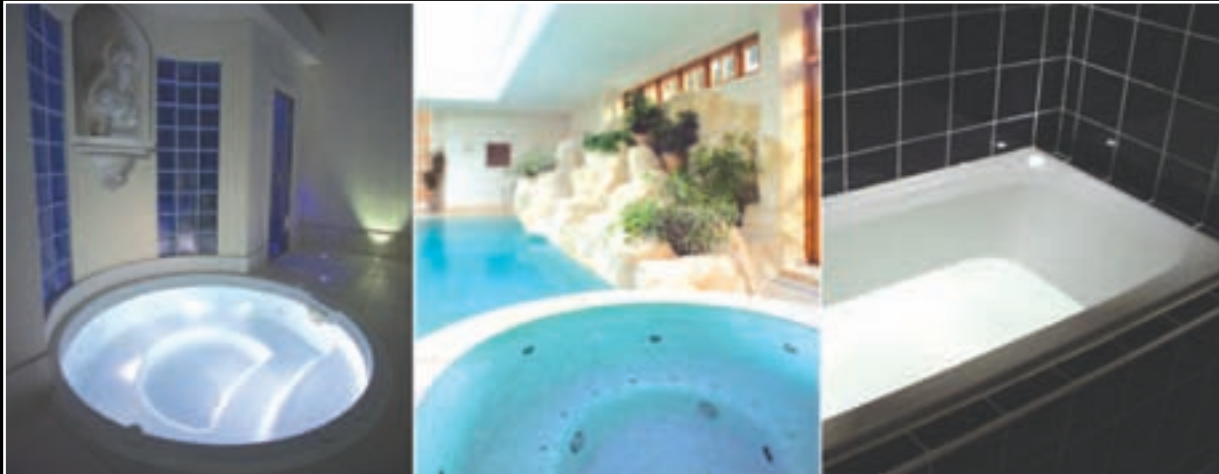
Standard six-segment colourwheel, which can be left to cycle through the colours slowly, or stopped on one for static light output. Optionally, a Varicolour colourwheel can be purchased separately, allowing you to customise a six-segment colourwheel from a choice of 15 colours.

Electrical Requirements

2 x 240V household electricity supplies.

Product Number	Tail Lengths												
	1.0m	1.5m	2.0m	2.5m	3.0m	3.5m	4.0m	4.5m	5.0m	5.5m	6.0m	6.5m	7.0m
CWD6A			3		3								
CWD6B		1	1	1	1	1	1						
CWD8			2		2		2		2				
CWD9					3				3				3

Spa and Bath Kits



SPK6 / SPK6XL / SPK10

Standard Kit Contents

All kits come with full installation instructions and are supplied in protective packaging. The exact lengths of the tails are shown in the table below. The number in the square denotes how many tails of a certain length are in each harness.

SPK6:

Harness with six tails, 3.0–4.0m
Six 16mm stainless steel spa/bath fittings are supplied with this kit.

SPK6XL:

Harness with six tails, 4.5–6.5m
Six 16mm stainless steel spa/bath fittings are supplied with this kit.

SPK10:

Harness with ten tails, 4.5–6.5m
Ten 16mm stainless steel spa/bath fittings are supplied with this kit.

Lightsource

All spa kits come with a 100W tungsten halogen lightsource with two plugs. One powers the lamp whilst the other switches the colourwheel on or off.
Dimensions: (L)286mm x (W)155mm x (H)119mm.
For more information on the lightsource, see page 23.

Colourwheel

Standard six-segment colourwheel, which can be left to rotate slowly through the colours, or stopped on one for static light output. Optionally, a Varicolour colourwheel can be purchased separately, allowing you to customise a six-segment colourwheel from a choice of 15 colours.

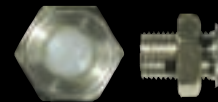
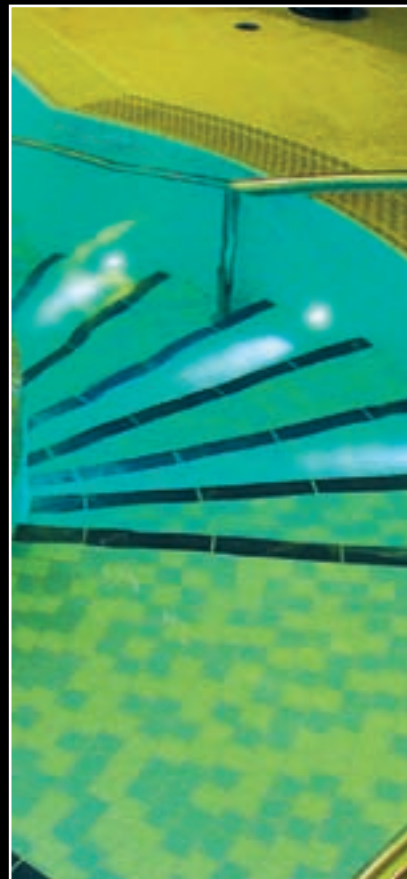
Electrical requirements

2 x 240V household electrical supplies. If intended for exterior use, a water resistant enclosure is required. Please see options on page 24.

This is a truly unique product that will continue to give the 'wow' factor to your bathroom or spa for many years. It allows you to maximise your relaxation at bath time by introducing mood influencing colours to the water. Relax in sleep enhancing purple before retiring to bed, revitalise yourself in orange in the morning, or just enjoy a continuous slow cycle through your favourite colours.

The small stainless steel end fittings have no electrical wiring to them thus removing the usual danger of mixing water and light.

As their name suggests, these kits are suitable for installation in baths, spas and Jacuzzis.



The End Fittings

Spa kits are supplied with 16mm stainless steel end fittings, designed so that they can be submerged in water. A 16mm cutout is required for these fittings.

See accessories on page 24 for drill bits.



Lightsource:

A 100W Tungsten Halogen lightsource is supplied with these kits, and this has a six segment colourwheel already installed in it.

This kit also allows for a brighter 150W lightsource to be chosen, for more details please see page 23.

Product Number \ Tail Lengths	Tail Lengths							
	3.0m	3.5m	4.0m	4.5m	5.0m	5.5m	6.0m	6.5m
SPK6	2	2	2					
SPK6XL				2		2		2
SPK10				2	2	2	2	2

Small / Medium / Large /
Extra Large



This complete fibre optic kit has been designed to allow you to achieve a soothing colour-changing effect in your sauna. However, it can also be used to provide static white accent lighting.

As with all of Unlimited Light's kits, the Sauna Kit is easy to install, and easy to maintain. Only one lamp is used to light all of the tails and end fittings, so it always provides an even light.

The end fittings are designed to make the kit completely safe in wet and humid environments, so you never have to worry, just relax and enjoy your sauna.

The End Fittings

Sauna kits are supplied with 10mm diameter white end fittings, and require a 6mm cutout.



See accessories on page 24 for drill bits.

Lightsource:

A 35W Tungsten Halogen lightsource is supplied with these kits, and this has a five segment colourwheel already installed in it.



This kit also allows for a brighter 50W or 70W lightsource to be chosen, for more details please see page 23.



Standard Kit Contents

All kits come with full installation instructions and are supplied in protective packaging. The exact lengths of the tails are shown in the table below. The number in the square denotes how many tails of a certain length are in each harness.

SAUN16:

Harness with 16 tails, 1.5m–2.5m
16 10mm diameter white fittings are supplied with this kit.

SAUN30:

Harness with 30 tails, 1.5m–3.0m
30 10mm diameter white fittings are supplied with this kit.

SAUN75:

Harness with 75 tails, 2.0m–3.0m
75 10mm diameter white fittings are supplied with this kit.

SAUN100:

Harness with 100 tails, 2.0m–3.5m
100 10mm diameter white fittings are supplied with this kit.

SAUN150:

Harness with 150 tails, 2.0m–4.0m
150 10mm diameter white fittings are supplied with this kit.

SAUN200:

Harness with 200 tails, 2.0m–4.0m
200 10mm diameter white fittings are supplied with this kit.

Lightsource

35W Tungsten Halogen lightsource with one plug. As standard, this lightsource outputs continuously changing colours. The colourwheel can be removed to allow for static white light output.

Dimensions: (L)181mm x (W)155mm x (H)119mm.
For more information on the lightsource, see page 23.

Colourwheel

Five-segment colourwheel which outputs continuously changing colours. For static white light, the colourwheel can be removed.

Electrical Requirements

1 x 240V household electrical supply.

Product Number	Tail Lengths	1.5m	2.0m	2.5m	3.0m	3.5m	4.0m
SAUN16		5	6	5			
SAUN30		5	5	10	10		
SAUN75			25	25	25		
SAUN100			25	50	25		
SAUN150			50	50	50		
SAUN200			25	50	50	50	25

Star Decking Kits



SD55 / SD55+55 / SD110 /
SD110+110

Standard Kit Contents

All kits come with full installation instructions and are supplied in protective packaging. The exact lengths of the tails are shown in the table below. The number in the square denotes how many tails of a certain length are in each harness.

SD55

Harness with fifty-five tails, 1.0m–3.0m
110 flush fitting acrylic lenses are supplied with this kit.

SD55+55

Harness with 110 tails, 1.0m–3.0m
110 flush fitting acrylic lenses are supplied with this kit.

Lightsource

35W Tungsten Halogen lightsource with one plug. As standard, this lightsource outputs continuously changing colours. The colourwheel can be removed to allow for static white light output. Also included is a weatherproof enclosure so the kit can be installed outdoors, typically under decking. Dimensions: (L)300mm x (W)200mm x (H)120mm

Electrical requirements

1 x 240V household electrical supply.

SD110

Harness with 110 tails, 1.0–5.0m
110 flush fitting acrylic lenses are supplied with this kit.

SD110+110

Harness with 220 tails, 1.0–5.0m
220 flush fitting acrylic lenses are supplied with this kit.

Lightsource

75W Tungsten Halogen lightsource with two plugs. One powers the lamp, the other switches the colourwheel on or off. Also included is a weatherproof enclosure so the kit can be installed outdoors, typically under decking. Dimensions: (L)400mm x (W)300mm x (H)220mm
More lightsource information on page 23.

Electrical requirements

2 x 240V household electrical supplies

Colourwheel

For the SD55 range, a five-segment colourwheel is supplied, which outputs continuously changing colours. For static white light, the colourwheel can be removed.

For the SD110 range, a six-segment colourwheel is supplied, which can be left to rotate continuously through the colours or stopped on one for static light output. Optionally, a varicolour colourwheel can be purchased separately, allowing you to customise a six-segment colourwheel from a choice of 15 colours.

The acrylic heads in these star deck lighting kits are almost invisible when not in use, but come the evening you can switch on the lights and watch heads turn. Magical effects can be created in the floor of children's bedrooms or play areas, especially when used with a twinkle effect wheel.

Some of the areas these kits can be installed in include: wooden floors, wooden decking and paving, as well as interior and exterior steps and stages. Tails of these deck lighting kits can be installed in cement, between paving slabs, stones or even grout between tiles.

A water resistant enclosure is supplied as standard to allow for the light source to be sited outdoors – typically underneath your decking.



The End Fittings

These Star Decking kits are supplied with flush fitting acrylic lenses as standard. A 3mm cutout is required for these fittings.

See accessories on page 24 for drill bits.



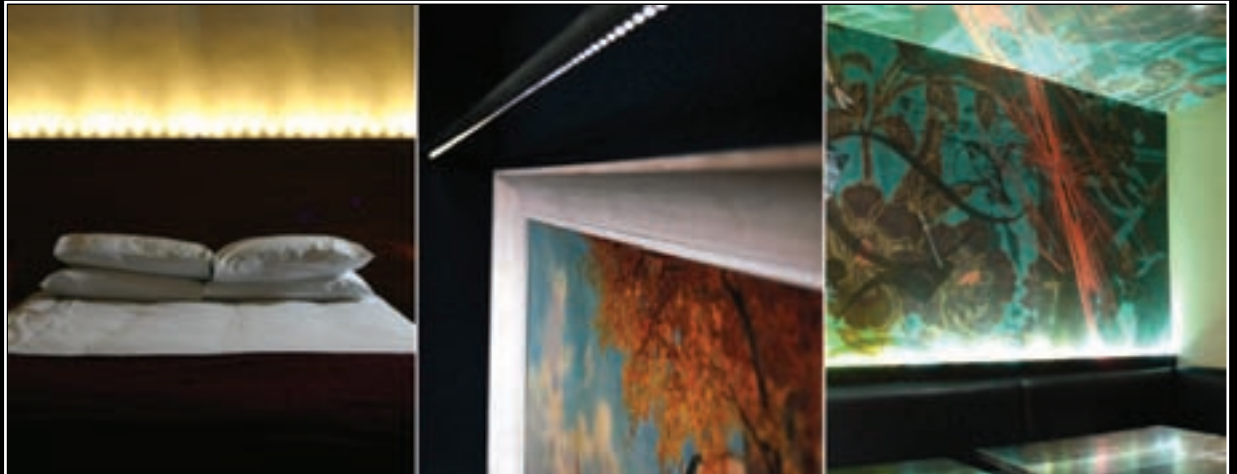
Lightsource:

A 35W or 75W Tungsten Halogen lightsource is supplied, depending upon which kit you buy, and these have colourwheels already installed in them

For more details please see page 23.

Product Number \ Tail Lengths	1.0m	1.5m	2.0m	2.5m	3.0m	3.5m	4.0m	4.5m	5.0
SD 55	5	8	11	14	17				
SD55+55	10	16	22	28	34				
SD110	10		16		22		28		34
SD110+110	20		32		44		56		68

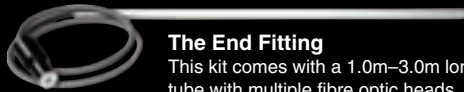
CW



This discreet kit allows you to create dramatic washes of light on walls in places that are traditionally hard to light, for example behind bedheads or under furniture. It can easily transform a plain bedroom into something beautiful.

A satin chrome or anodised black tube with multiple fibre optic heads along its length provides a remarkable amount of light from very small fittings. It is beautiful in its own right, but also small enough to conceal using the supplied wall mounts should you only wish to see the lighting effect. Of course, as there is no electricity at the fitting, it is also safe to use in wet environments, and it comes supplied as standard with colour change capabilities.

Best suited for use on light or neutral coloured walls and surroundings.



The End Fitting

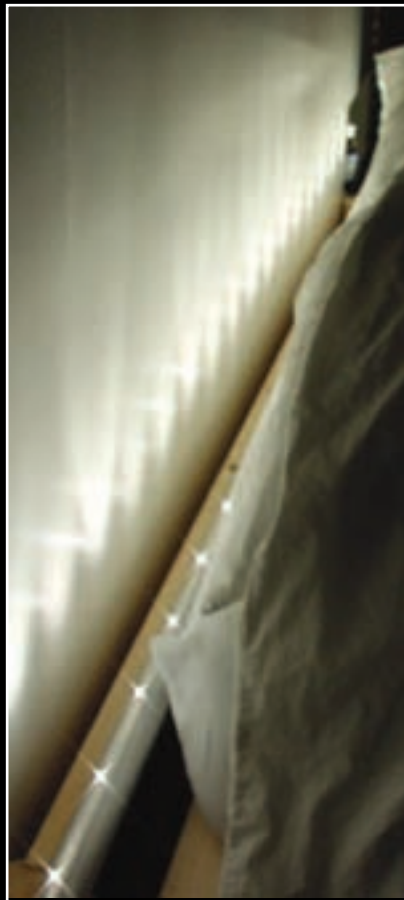
This kit comes with a 1.0m–3.0m long tube with multiple fibre optic heads. It can be concealed easily, or can become a feature in its own right.

Lightsource:

A 100W Tungsten Halogen lightsource is supplied with these kits, and this has a six segment colourwheel already installed in it.



This kit also allows for a brighter 150W lightsource to be chosen, for more details please see page 23.



Standard Kit Contents

All kits come with full installation instructions and are supplied in protective packaging. 1.0m–3.0m long satin chrome or black tube with multiple heads at 20mm centres. Harness length 1.0m standard, but can be configured up to 6.0m at an extra cost (see our website for details). 'C' clips for mounting.

Lightsource

100W tungsten halogen with two plugs. One powers the lamp, the other switches the colourwheel on or off. Dimensions: (L)280mm x (W)166mm x (H)125mm. For more information on the lightsource, see page 23.

Colourwheel

Standard six-segment colourwheel, which can be left to rotate slowly through the colours, or stopped on one for static light output. Optionally, a Varicolour colourwheel can be purchased separately, allowing you to customise a six-segment colourwheel from a choice of 15 colours.

Electrical Requirements

2 x 240V household electricity supplies.

Available Tube Lengths	1.0m	1.5m	2.0m	2.5m	3.0m	
Available Tail Lengths	1.0m	2.0m	3.0m	4.0m	5.0m	6.0m

Garden Lighting Kits



G6 / G6B / G8 / G9 / G10

Standard Kit Contents

All kits come with full installation instructions and are supplied in protective packaging. The exact lengths of the tails are shown in the table below. The number in the square denotes how many tails of a certain length are in each harness. Please note that the numbers at the top of the table (in the tail lengths row) are irregular due to varying tail lengths in kits.

G6

Harness with six tails, 2.0m–3.0m
Six adjustable stainless steel trumpet fittings with mounting stakes are supplied with this kit.

G6B

Harness with six tails, 1.5m–4.0m
Six adjustable stainless steel trumpet fittings with mounting stakes are supplied with this kit.

G8

Harness with eight tails, 2.0m–5.0m
Eight adjustable stainless steel trumpet fittings with mounting stakes are supplied with this kit.

G9

Harness with nine tails, 1.0m–5.8m
Nine adjustable stainless steel trumpet fittings with mounting stakes are supplied with this kit.

G10

Harness with ten tails, 3.0m–7.0m
Ten adjustable stainless steel trumpet fittings with mounting stakes are supplied with this kit.

The exact lengths of all the tails are shown in the table at the bottom of the page.

Lightsource

100W tungsten halogen, with two plugs. One powers the lamp, the other switches the colourwheel on or off. There is also a weatherproof enclosure included in this kit, to allow for the kit to be installed outdoors. Dimensions: (L)400mm x (W)300mm x (H)220mm

Colourwheel

Standard six-segment colourwheel, which can be left to rotate slowly through the colours, or stopped on one for static light output. Optionally, a Varicolour colourwheel can be purchased separately, allowing you to customise a six-segment colourwheel from a choice of 15 colours.

Electrical Requirements

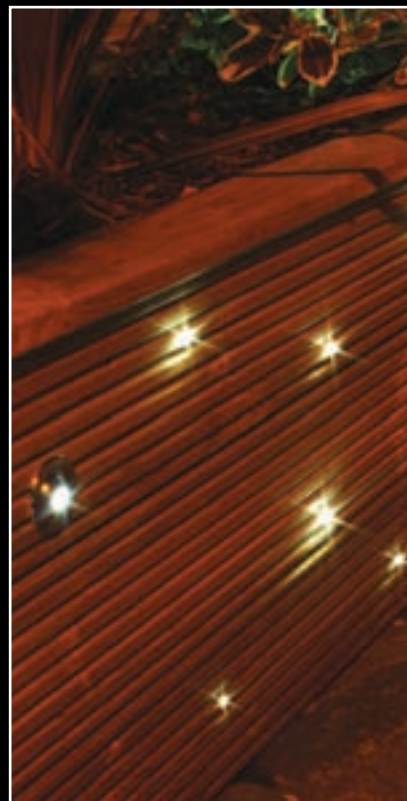
2 x 240V household electrical supplies.

Our garden kits can turn your garden into an amazing new living space.

A water resistant enclosure for this kit's lightsource is supplied as standard, so it can be located outside, with the tails buried in flowerbeds, planters and even under lawns. An armoured or rigid conduit is recommended for feeding the tails through if it is likely they will be damaged by garden tools.

The fittings are supplied with three fin stakes which fix them in position in the earth. Plants and architectural features can be highlighted clearly, as the fittings themselves can be rotated.

Ordinary gardens can become beautiful night-time displays with these kits.



The End Fittings

This kit comes with stainless steel trumpet fittings attached to mounting stakes. These hold the fittings firmly in the earth, allowing the fitting to be rotated to highlight specific features.



Lightsource:

A 100W Tungsten Halogen lightsource is supplied with these kits, and this has a six segment colourwheel already installed in it.

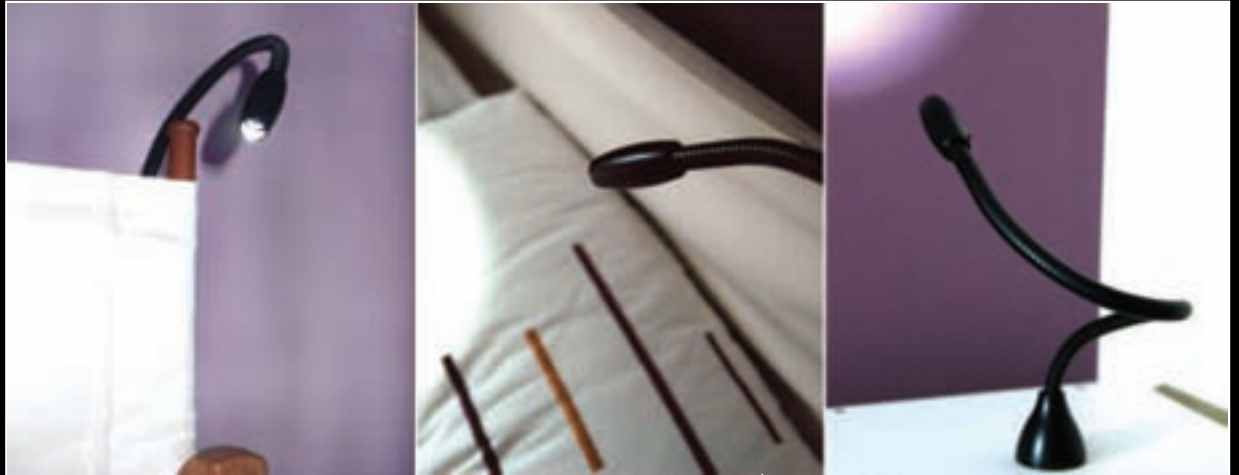
This kit also allows for a brighter 150W lightsource to be chosen, for more details please see page 23.

Please note that the numbers at the top of the table (in the tail lengths row) are irregular due to varying tail lengths in kits.

Product Number	Tail Lengths																
	1.0m	1.5m	1.6m	2.0m	2.2m	2.5m	2.8m	3.0m	3.4m	3.5m	4.0m	4.6m	5.0m	5.2m	5.8m	6.0m	7.0m
G6				3				3									
G6B		1		1		1		1		1	1						
G8				2				2			2		2				
G9	1		1		1		1		1		1	1		1	1		
G10								2			2		2			2	2

Bed Buddy Kits

BBD1 / BBD2



The Bed Buddy is the ultimate narrow focus, high intensity reading light, concentrating all of the light onto the page while minimising the disturbance to those beside you who may wish to sleep, and the flex and stay stem allows you to position the light for maximum benefit.

The lamp is housed in a lightbox which can be located up to 1.5m away from the base of the flex and stay. The light refracts down the fibre optic cable and there is no heat in either the fitting or the light that is emitted.

Standard Kit Contents

All kits come with full installation instructions and are supplied in protective packaging.

BBD1

1 x 470mm flex and stay (including base and head), attached to 1.5m of fibre optic tails.

Mini LED cylindrical lightsource, powered by an external power supply unit.

Lightsource Dimensions: (L)120mm x 35mm diameter.
Electrical requirements: 1 x 240V household electrical supply.

BBD2

2 x 470mm flex and stay (including base and head), attached to 1.5m of fibre optic tails.

2 x mini LED cylindrical lightsource, powered by an external power supply unit.

Lightsource Dimensions: (L)120mm x 35mm diameter.
Electrical requirements: 2 x 240V household electrical supply.



Sensory Lighting



SE1001 / 1002 / 1003 / 1502 /
1503 / 2002 / 2003 / 2004
UV1001 / 1002 / 1003 / 1502 /
1503 / 2002 / 2003 / 2004

Standard Kit Contents

All kits come with full installation instructions and are supplied in protective packaging.

Colour-Changing Kit Contents

Harness

SE1001: 100x1.0m tails
SE1002: 100x2.0m tails
SE1003: 100x3.0m tails
SE1502: 150x2.0m tails
SE1503: 150x3.0m tails
SE2002: 200x2.0m tails
SE2003: 200x3.0m tails
SE2004: 200x4.0m tails

Lightsource

75W Tungsten Halogen lightsource with one plug. As standard, this lightsource outputs continuously changing colours.

Dim: (L)286mm x (W)155mm x (H)119mm

For more information on the lightsource, see page 23.

Colourwheel

Standard six-segment colourwheel, which can be left to rotate slowly through the colours, or stopped on one for static light output. Optionally, a Varicolour colourwheel can be purchased separately, allowing you to customise a six-segment colourwheel from a choice of 15 colours.

UV Sensory Kit Contents

Harness

UV1001: 100x1.0m tails
UV1002: 100x2.0m tails
UV1003: 100x3.0m tails
UV1502: 150x2.0m tails
UV1503: 150x3.0m tails
UV2002: 200x2.0m tails
UV2003: 200x3.0m tails
UV2004: 200x4.0m tails

Lightsource

75W Tungsten Halogen lightsource with one plug. As standard, this lightsource outputs continuously changing colours.

Dim: (L)286mm x (W)155mm x (H)119mm

For more information on the lightsource, see page 23.

Twinkle Wheel

Metal twinkle wheel supplied as standard, which can be left to rotate continuously to provide a shimmering effect or can be stopped for static light output

Electrical Requirements

2 x 240V household electrical supplies.

The separate power feed on the colourwheel allows for static colour output.

If the kit is to be used outside, a separate weatherproof enclosure is needed.

There are two types of sensory lighting kits available from Unlimited Light –

Colour-Changing and Ultraviolet. The harnesses in both of these kits are completely safe to touch, as no electricity runs through the tails. The fibre optic side glow is also effective as decoration in commercial properties such as bars, restaurants or cafes, though the benefits are equally enjoyable in the home.

Colour-Changing Sensory Kit

The colour-changing kit consists of polymer fibres in a clear sleeve, cracked to leak light out of the sides.

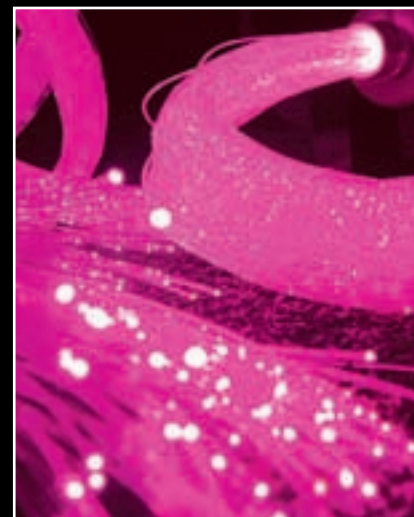
It is primarily used in sensory or treatment rooms in hospitals and schools, where the colour-change property stimulates the minds of the users. It also helps in learning to identify colours, and is beneficial to children of any age with learning difficulties.

UV Side Sparkle Sensory Kit

The ultraviolet side sparkle sensory kit consists of cracked polymer fibres in UV reactive sheathing. Up to eight different colours of tails can be incorporated into one harness.

The effect produced by these kits is different to that of the colour-changing kit, as the tails do not change colour. Instead, a twinkle effect wheel is used to create a beautiful sparkling effect, even without the use of UV light.

Under ultraviolet black light the tails also glow dramatically. Ultraviolet black light is increasingly being used in treatment and play rooms in hospitals and schools, and is particularly beneficial in a dark room to those with impaired vision, as the colour is more intense than in ordinary light.



Lightsource:

A 75W Tungsten Halogen lightsource is supplied with these kits, and this has a colour or twinkle effect wheel already installed in it.

For more details please see page 23.

Star Ceiling Ring

SCR70B / SCR70R



The Fibre Optic Star Cloth Ring is a starry ceiling fixture that is easy to install, and is ideal for areas where access above the ceiling is restricted.

The star cloth is available in two colours – plum red and midnight blue – and is fitted with 70 'stars'. It is mounted on a 1223mm diameter aluminium ring which has four fixing points for attaching to the ceiling.

A small LED lightsource illuminates the stars, and scrolls through six vibrant colours: green, red, blue, pink, turquoise and yellow. The LED lightsource should be screwfixed to the ceiling, as should the ring itself. If you do have access above your ceiling, we also have a star ceiling kit that lights from the ceiling itself.

Both decorative and therapeutic (colours such as blue and green are known to have a calming effect on children and adults), the Star Cloth 70 is ideal for nurseries and bedrooms, as well as dentists' and beauty therapists' treatment rooms. It also creates a beautiful effect in bars and restaurants, in areas such as over booth seating.

Further Information

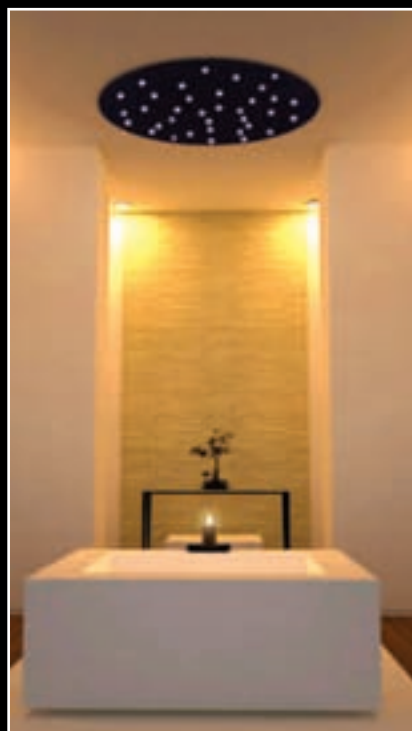
This kit comes with a colourwheel fitted with colours much like the ones to the right. Please note, however, that due to the printing process and variations in the light intensity these colours are indicative only, and may not exactly match.



Fixing these rings to the ceiling could not be easier. Four wire rings protrude from the cloth, and just need hooks in the ceiling to attach to. All fixings required are included in the kit.



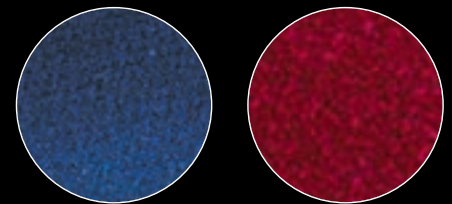
The ideal way to assemble this ceiling ring is to fix the lightsource to the ceiling above where the ring will be attached. This way, the lightsource will not be in view when the ring is lit up.



Standard Kit Contents

All kits come with full installation instructions and are supplied in protective packaging.

Star cloth serge material (midnight blue or plum red) mounted on 1223mm diameter ring.

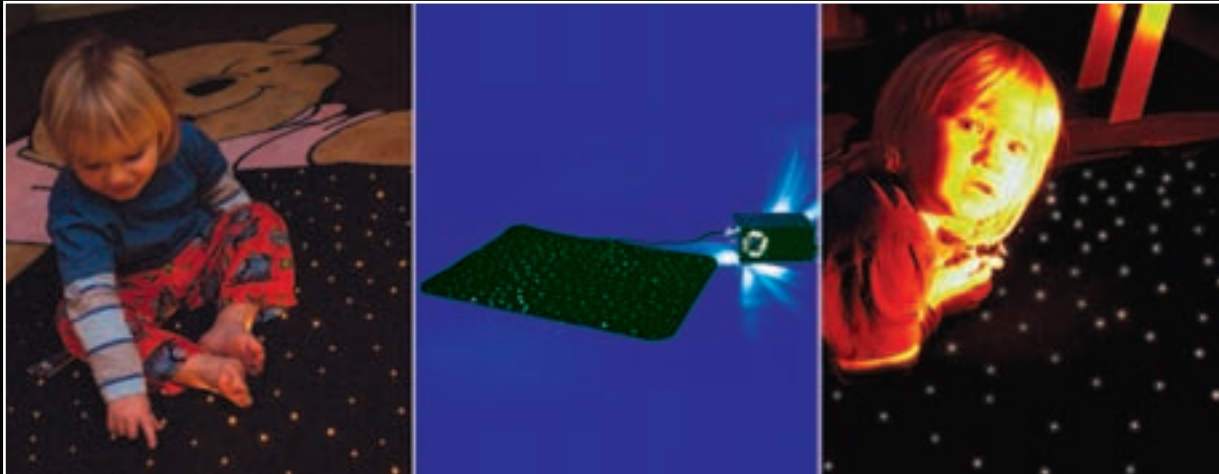


LED Lightsource

Dimensions: (L)90mm x (W)55mm x (H)55mm



Star Carpet



STC1010 / STC1015 / STC1212 /
STC1435 / STC2020 / STC3030

Standard Kit Contents

All kits come with full installation instructions and are supplied in protective packaging. If you already have a lightsource suitable for this kit (50W tungsten halogen) there is an option to buy just the carpet itself by using the code listed below the kit details.

STC 1010

1m x 1m carpet
CARPET ONLY ORDERING CODE:
STCO1010

STC 1015

1m x 1.5m carpet
CARPET ONLY ORDERING CODE:
STCO1015

STC 1212

1.25m x 1.25m carpet
CARPET ONLY ORDERING CODE:
STCO1212

STC 1435

1.4m x 3.5m carpet
CARPET ONLY ORDERING CODE:
STCO1435

STC 2020

2m x 2m carpet
CARPET ONLY ORDERING CODE:
STCO2020

STC 3030

3m x 3m carpet
CARPET ONLY ORDERING CODE:
STCO3030

Lightsource

50W tungsten halogen lightsource, in either black or white, with two plugs. One powers the lamp whilst the other switches the colourwheel on or off.
Dimensions: (L)286mm x (W)155mm x (H)119mm
For more information on the lightsource, see page 23.

An upgrade to a 100W lightsource is also available.

Colourwheel

Standard six-segment colourwheel, which can be left to rotate slowly through the colours, or stopped on one for static light output. Optionally, a Varicolour colourwheel can be purchased separately, allowing you to customise a six-segment colourwheel from a choice of 15 colours.

Carpet colours

Kits are supplied with high quality black, blue, red or white carpet as standard, though other colours are available at an extra cost – please contact us for details.

Tail lengths

The length of the fibre optic tails between the carpet and the lightsource is 1m as standard, but can be customised to suit.

Our range of star carpets is made using high quality carpet with optical fibre woven into the pile. It can be used on top of existing flooring, or can be attached to a wall. The basic colours available are black, blue, red or white, but other colours can be supplied at an extra cost.

The fibre optics are lit by a powerful 50W tungsten halogen lightsource, which comes factory fitted with a six segment colourwheel. This creates a beautiful shimmering effect of constantly changing colours.

Please note that the carpet should not be used in areas where heavy wear is likely, such as doorways, and it is not suitable for use in spaces where it may have heavy weights pushed over it.



The Star Carpet

This kit is supplied with a black, blue, red or white high quality carpet as standard, but other colours can be supplied at an extra cost. As no heat is emitted from the lights, this carpet is perfectly safe for children to play on, but should not be subjected to heavy wear.



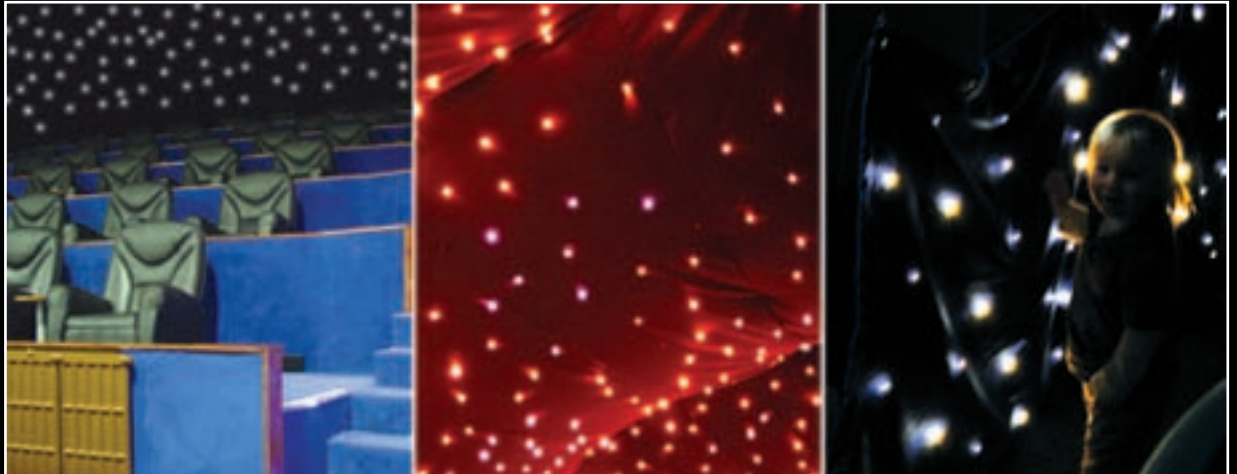
Lightsource:

A 50W Tungsten Halogen lightsource is supplied with these kits, and this has a six segment colourwheel already installed in it.

This kit also allows for a brighter 100W lightsource to be chosen, for more details please see page 23.

Star Cloth

SCLK2010 / SCLK2020 /
SCLK3020 / SCLK4020



These beautiful Star Cloths give you the experience of bringing the night sky indoors.

There are four different sizes and three different colours available, and the cloth can either be bought as part of a kit or on its own for use with your own lightsource. The length of the fibre optic harness between the cloth and the light source connector can be specified on order.

If the star cloth is purchased as part of a complete kit, a 50W tungsten halogen lightsource is included. This is pre-installed with a six segment colourwheel. An upgrade to a more powerful 100W light source is also available.



Hanging the Star Cloth

The top edge of the Star Cloth has a row of rings that allow you to tie it to a rail or other mounting system, and there are also velcro mounting strips on the back.

Lightsource:

A 50W Tungsten Halogen lightsource is supplied with these kits, and this has a six segment colourwheel already installed in it.



This kit also allows for a brighter 100W lightsource to be chosen, for more details please see page 23.



Standard Kit Contents

Lightsource information for all kits is detailed below the individual kit contents. All kits come with full installation instructions and are supplied in protective packaging. If you already have a lightsource suitable for use with this kit (50W tungsten halogen) there is also the option to buy the cloth by itself using the code listed below the kit details.

SCLK2010

2m x 1m cloth
CLOTH ONLY ORDERING CODE: SCO2010

SCLK2020

2m x 2m cloth
CLOTH ONLY ORDERING CODE: SCO2020

SCLK3020

3m x 2m cloth
CLOTH ONLY ORDERING CODE: SCO3020

SCLK4020

4m x 2m cloth
CLOTH ONLY ORDERING CODE: SCO4020

Lightsource

50W tungsten halogen lightsource, in either black or white, with two plugs. One powers the lamp whilst the other switches the colourwheel on or off.
Dimensions: (L)286mm x (W)155mm x (H)119mm
More lightsource information on page 23.

An upgrade to a 100W lightsource is also available.

Colourwheel

Standard six-segment colourwheel, which can be left to rotate slowly through the colours, or stopped on one for static light output. Optionally, a Varicolour colourwheel can be purchased separately, allowing you to customise a six-segment colourwheel from a choice of 15 colours.

Material

High quality, flame retardant woollen serge material with tie rings on top edge and Velcro attached to backing.

Colours:

Available in black, blue or white.

Tail Lengths

The length of the fibre optic tails between the star cloth and the light source can be specified at the time of ordering.

Sensory Wall Tubes



SWT1020 / SWT1520

Standard Kit Contents

All kits come with full installation instructions and are supplied in protective packaging. Alternatively, if you already have a lightsource that would be suitable for use with this kit, you can order the tube with tails by itself using the code listed below.

SWT1020

One 1m aluminium tube
 Harness with sixty-six 2m tails.
 TUBE ONLY ORDERING CODE: SWTO1020

SWT1520

One 1.5m aluminium tube
 Harness with ninety-nine 2m tails.
 TUBE ONLY ORDERING CODE: SWTO1520

Lightsource

50W tungsten halogen lightsource, available in black or white, with two plugs. One powers the lamp, the other switches the colourwheel on or off.
 Dimensions: (L) 286mm x (W)155mm x (H)119mm
 For more information on the lightsource, see page 23.
 An upgrade to a 100W lightsource is also available

Colourwheel

Standard six-segment colourwheel, which can be left to rotate slowly through the colours, or stopped on one for static light output. Optionally, a Varicolour colourwheel can be purchased separately, allowing you to customise a six-segment colourwheel from a choice of 15 colours.

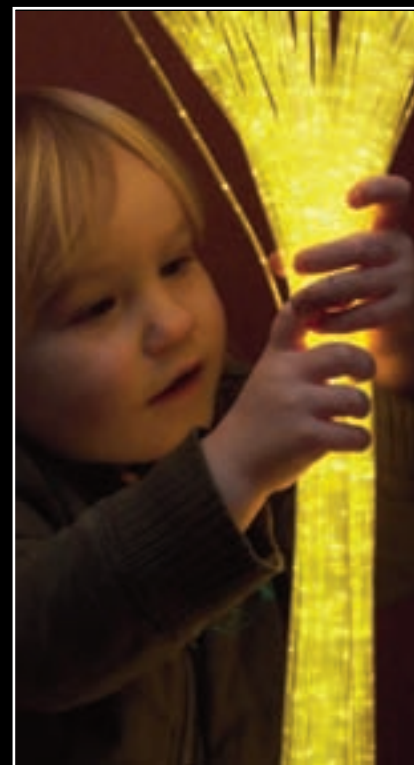
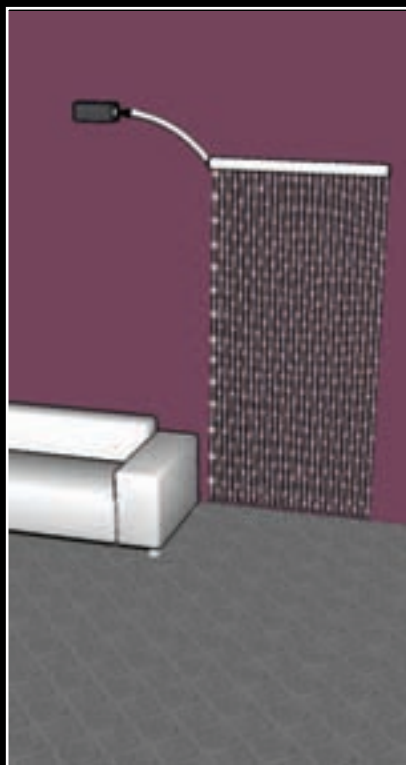
Tail Lengths

The length of the fibre optic tails between the light source and the wall tube can be specified at the time of ordering

These sensory wall tubes consist of aluminium tubes with long tails of sensory fibre cascading from points along their entire lengths. They can be bought as part of a full kit, or the sensory tube can be bought on its own for use with your own lightsource.

The tube can be mounted on a wall, above a door or above a window, and produces a stunning curtain of light, which is safe to play with, stand under and walk through.

The tube is finished in white, and continuously cycles through six different colours (if using the supplied lightsource, which is fitted with a six segment colourwheel), or they can be left to shine on one static colour of your choice.



Mounting Brackets:

The wall tubes are attached to the wall with mounting brackets like the one pictured to the right. After attaching them to the wall, simply slide the tube in (there is a cutout at the bottom of the bracket to allow for the fibre tails), fix them with the supplied grub screw and the tube is ready to be plugged in and used.



Lightsource:

A 50W Tungsten Halogen lightsource is supplied with these kits, and this has a six segment colourwheel already installed in it.

This kit also allows for a brighter 100W lightsource to be chosen, for more details please see page 23.



Lightsource Information

Standard Lightsources - Those that come supplied with the kits

50W , 75W, 100W Tungsten Halogen Lightsources

These lightsources have two plugs – one powers the lamp while the other switches the colourwheel on or off. All these lightsources come with a standard, six segment glass colourwheel.
Dimensions: (L)286mm x (W)155mm x (H)119mm



Lamp Power	50W	75W	100W
Fibre Type	Plastic / Glass	Plastic / Glass	Plastic / Glass
Supply Voltage	240VAC 50Hz	240VAC 50Hz	240VAC 50Hz
Port Connector	30mm	30mm	30mm
Power Cord	IEC Cable	IEC Cable	IEC Cable
Order Code	AU50W	AU75W	AU100W

35W Tungsten Halogen Lightsource

As standard this lightsource outputs continuously changing colours, but the colourwheel can be removed to allow for static white light output. All 35W lightsources come with a standard five colour plastic colourwheel.
Dimensions: (L)181mm x (W)100mm x (H)105mm



Lamp Power	35W
Fibre Type	Plastic
Supply Voltage	240VAC 50Hz
Port Connector	12mm
Power Cord	Non-removable
Order Code	AU35W



CW6C:
6 segment glass colourwheel – comes as standard with 50W / 75W / 100W lightsources



PCW5:
5 segment plastic colourwheel – comes as standard with 35W lightsources

Lightsource Options - Options that enhance your kits



150W Metal Halide Lightsource Option

Some kits allow for an upgrade to a 150W metal halide lightsource, which outputs a lot more light than a standard 100W lightsource. The kits eligible for this upgrade are the Floor Paver, Colourwand, Spa, Downlight and Garden kits.

Dimensions: (L)277mm x (W)288mm x (H)129mm

Lamp Power	150W
Fibre Type	Glass / Plastic
Supply Voltage	240VAC 50Hz
Port Connector	30mm
Power Cord	IEC Cable

Remember that Unlimited Light are always striving to improve our products, so keep checking www.unlimitedlight.com for the most up-to-date information and news.

Remote Control Option



All lightsources in our range are available with an optional RF remote control unit which operates at 433 MHz.

There are two available models – the UIR1F (for lightsources with a single electrical feed) and the UIR2F (for lightsources with two separate electrical feeds).

A remote control keyfob is used to control the unit. On model UIR1F, one button is used to switch the power to the lightsource on and off. On model UIR2F, there are two buttons, one to power the lightsource itself, the other to power the colour wheel (to allow it to be paused on one static colour).

Please note that the Solstice Chandelier range comes with remote control as standard.

Accessories

Our kits come with everything you need as standard, but you can also upgrade many of them to better suit your requirements.

A member of the Unlimited Light team will be only too happy to advise you on the correct accessory to suit your kit.

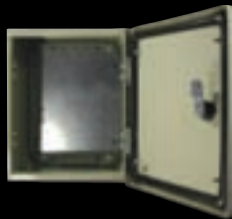
Weatherproof Enclosures

To locate lightsources outdoors, something is needed to protect them from the elements. These weatherproof enclosures can be mounted on walls or placed under decking, and come complete with a seal for an electrical feed. However, they cannot be submerged, so should not be placed in an area susceptible to flooding.



WR1

Large weatherproof enclosure, suitable for kits with a 50W, 75W or 100W lightsource.
Dimensions: (L)400mm x (W)200mm x (H)220mm



WR2

Small weatherproof enclosure, suitable for kits with a 35W lightsource.
Dimensions: (L)300mm x (W)200mm x (H)120mm

Please note that a weatherproof enclosure comes as standard with the Star Decking and Garden kits.

Replacement lamps

One of the benefits of fibre optic lighting is that it only requires one lamp to illuminate several points of light, and these lamps typically have a very long life expectancy. However, when the lamp does eventually expire, we can supply a complete range of replacements for every lightsource.

LV35: 35W halogen lamp, suitable for kits with a 35W lightsource

LV50: 50W halogen lamp, suitable for kits with a 50W lightsource

LV75: 75W halogen lamp, suitable for kits with a 75W lightsource

LV100: 100W halogen lamp, suitable for kits with a 100W lightsource



Drill bits

All you need to install an Unlimited Light kit is a selection of tools commonly found in the home. However, we understand that not everyone will have exactly the right drill bits for drilling the holes, so we have introduced a range of drill bits that will ensure you are well prepared for installation anywhere. This brochure tells you exactly which drill bit is needed for each kit (look on the individual kit pages under **End Fittings**), so all you have to do is match up this size with the sizes listed below. Please note that the pictures of the drill bits are not actual size.

ACSD1: 1mm drill bit, for use with the Star Ceiling kit (bare fibres)



ACSD3: 3mm drill bit, for use with the Star Ceiling kit (with lenses) and the Star Decking kit



ACSD10: 10mm drill bit, for use with the Crystal Ceiling kit (in plasterboard) and the Sauna kit



ACSD11: 11mm drill bit, for use with the Crystal Ceiling kit (in wood)



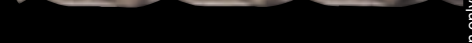
ACSD12: 12mm drill bit, for use with the Crystal Ceiling kit (with mounting sleeves)



ACSD16: 16mm drill bit, for use with the Spa and Bath kit



ACSD28: 28mm drill bit, for use with the Floor Paver kit (with square end fittings) and the Mini Floor kit



ACSD38: 38mm drill bit, for use with the Floor Paver kit (with round end fittings)



ACSD40: 40mm drill bit, for use with the Downlight kit



Images for illustration only

Decorative Wheels

Colourwheels allow you to upgrade or change the effect your lightsource outputs. Twinkle wheels can be used instead of colourwheels to give a magical shimmering effect to your light.

For kits with a 35W lightsource:

PCW4:
4 segment plastic colourwheel, with magenta, blue, pink and clear (which gives white light output) segments.



PCW5:
5 segment colourwheel, with red, blue, green, orange and clear segments.



PBWT:
Plastic twinkle wheel



PBLWT:
Plastic twinkle wheel



For kits with a 50W, 75W or 100W lightsource:

CW4C:
4 segment glass colourwheel, with green, yellow, magenta and clear segments



CW6C:
6 segment glass colourwheel with red, blue, green, yellow, magenta and clear segments



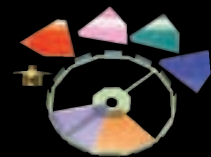
WBWT:
Metal twinkle wheel



WBLWT:
Glass twinkle wheel



CWVC: Our unique Varicolour colourwheel – Choose up to six colours from the chart below to customise a colourwheel (please note that colours are indicative only and due to the limitations of the reproduction process and variations in the light intensity with different type of fibre optics they may differ from the colour achieved with a fibre optic system).



Fire	Orange	Golden Amber	Apricot
Canary	Green	Jade	Turquoise
Italian Blue	Brilliant Blue	Bright Blue	Congo
Violet	Magenta	Pink	Clear (outputs white light)

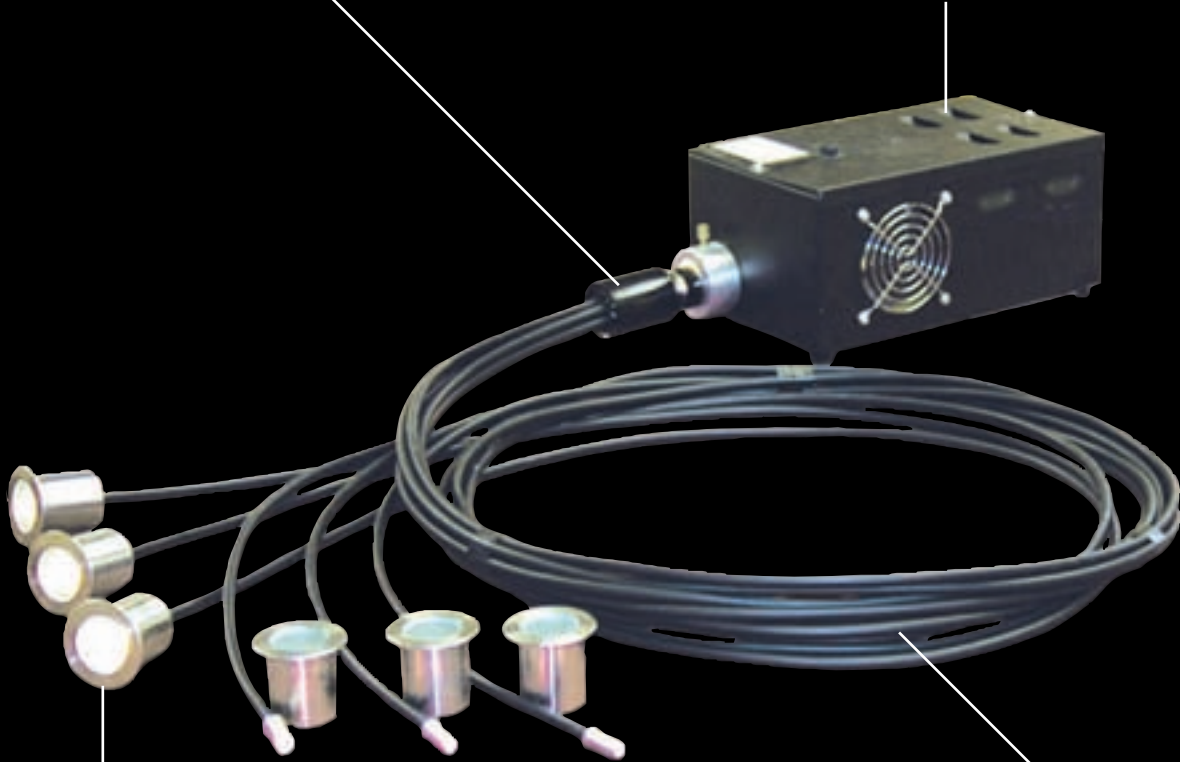
Changing a wheel is easy, and full instructions are included in the manual which accompanies your light source. They are also downloadable from the individual product pages on our website.

The Fibre Optic Lighting System

The common end is where the strands of fibre (or bundles of tails) that make up a harness meet up in order to harvest the light from the lightsource. They are highly polished to ensure maximum light output.



The lightsource is where we turn electricity into light which is then fed into the fibre optic harness. It also contains any effects wheels, such as a colour or twinkle wheel which is supplied with the chosen kit. Effects wheels can also be purchased separately so you can add a different effect. 200mm is needed all round the lightsource to ensure that adequate ventilation is available. See page 23 for details.



The end fitting is where the light which was generated in the lightsource and travelled along the harness is output. They come in many shapes and sizes, from tiny star ceiling fittings to large stainless steel pavers. There is no electricity or heat in the end fittings, making them safe to touch or walk on.

The harness is made up of many strands of optical fibre, which are usually wrapped in a flexible black sheathing for protection. It is used to transport the light from the light source to the end fitting. One end of the harness has a 'common end' which is the connector used to plug it into the lightsource. The other end is either terminated with a number of metal 'ferrules' which are used to connect the end fitting, or the fibres are left bare for use in some products.

What to consider before you order your Unlimited Light kit:

- If necessary, do you have access above or behind the material into which you wish to install the lighting? (Many kits require the fibre to be pushed through into an end fitting, so access to both sides is needed)
- Do you have an accessible location to house the lightsource? (Access will be required approximately every 4000 hours)
- Does this place allow for a 200mm space all around the lightsource? (This is to ensure adequate ventilation)
- Is this place out of reach for children? (Though the fibres and end fittings give off no heat, the lightsource itself can get quite hot. This is also important to remember when buying kits such as the Star Carpet that may not be installed in just one place)

Remember, not all kits require a remotely located lightsource, look at our Star Ceiling Rings, Solstice Chandeliers and Bed Buddy kits for ways to get fibre optics into limited spaces.

When you have found the right space, just visit www.unlimitedlight.com to place your order. If you do not have access to the internet, then phone 01890 883522 and one of our friendly staff members will be happy to help.

Frequently Asked Questions

I can't see exactly what I'm looking for in your range of products; can you make me something to order?

Yes. Our product range is designed to suit the majority of customers' requirements, but if you would like something different from what you see in this brochure, let us know.

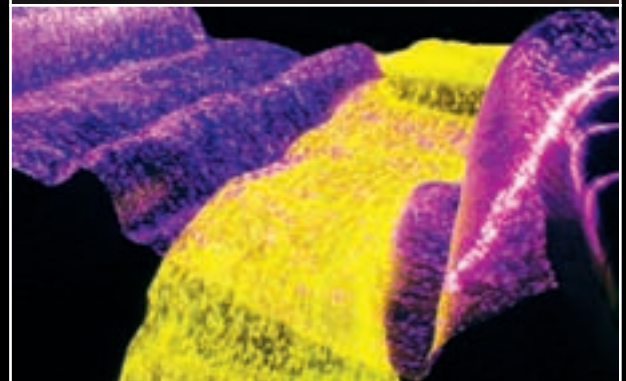
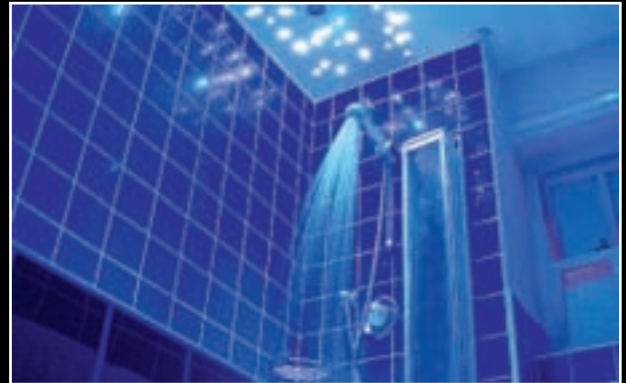
We can build you a bespoke system for a very modest additional cost, and additional delivery time (typically 1-2 days extra).

What is the difference between Unlimited Light kits and other similar products that I might find on the internet?

Beware of some of the cheap competitor products on the market. Some supposed 'fibre optic kits' are supplied with fibre optic 'tails' or cable that you have to cut yourself and then insert into the end fitting. This is a very poor way of terminating the fibre, and results in a loss of up to 40% light output. Consequently you are left with dim and uneven light scallops on walls, and overall poor performance.

All of Unlimited Light's fibre harnesses are factory terminated. The fibres are randomised, glued, ground, and highly polished at both ends to maximise the available light that travels from our lightsources to the end fittings.

Remember, if you want something specific that you can't find in this brochure, let us know; we will build a kit to your specification.





Unlimited Light
Home Place
Coldstream
Berwickshire
UK
TD12 4DT

Phone: (01890) 883522
Fax: (01890) 883271

E-mail: sales@unlimitedlight.com
Web: www.unlimitedlight.com



Unlimited Light USA
6119A Clark Center Avenue
Sarasota
Florida 34238

Phone: 1-800-UFO-5554
Phone: 941-343-8115
Fax: 941-330-0522

E-mail: sales@unlimitedlight.com
Web: www.fiberopticlighingkits.com

Distributed by:



Unlimited Light for Unlimited Applications

© 2010 Unlimited Light. All rights reserved. No part of this publication may be reproduced without written permission from Unlimited Light. Unlimited Light operate a continuous programme of product development. The right is reserved therefore to modify any specification without prior notice.