

PRODUCT SPECIFICATION SHEET



Rev. C1

UFO Light Wand Linear Lighting

Light Wands are a smaller version of the Light Tubes. Available in Standard 20mm (0.79") diameter and Mini 14mm (0.55") diameter they come as standard with black or silver anodised finish but can also be painted to a custom colour. The Light Wands use polymer fibres at close spacings to give a very even wash of light ideally suited to use in small display cases or to light pictures or information boards. Fibre choice of 0.75mm, 1mm or 1.5mm polymer is determined by the throw of light needed and how close the scallops of light need to merge. Light wands can also be supplied as gantries with 1" diameter legs in a powder coated finish.

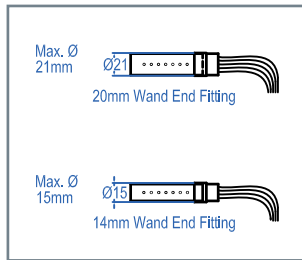
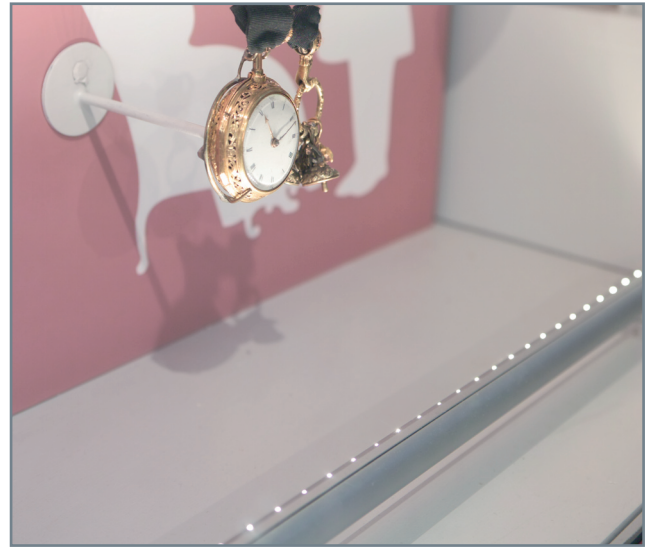
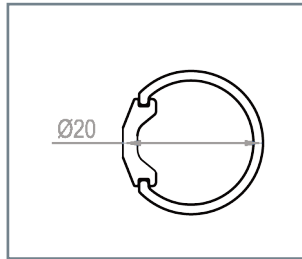
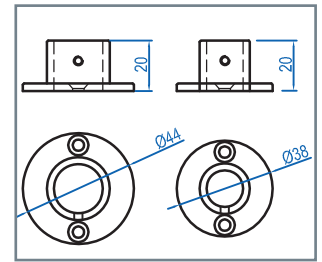
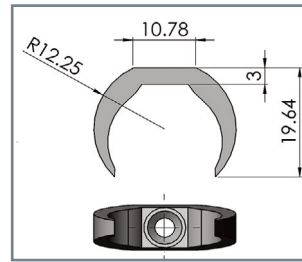
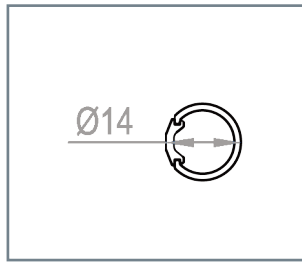
Consider the following when specifying Light Wands: the dimensions of the area to be lit; the space required to feed through the diameter of the wand at its widest point (usually the end cap); how the tails can run back to the light source; the intensity of light required. End caps are available if required. Following are the maximum lengths achievable with light wands lit from one end.

Single Light Wands - 20mm (0.79") diameter with 30mm common end

Fibre	Max. Tails	Centres	Max. Length
0.75mm	200	12mm (0.47")	2.4m (7.87ft)
0.75mm	200	15mm (0.59")	3m (9.84ft)
0.75mm	200	20mm (0.79")	4m (13.12ft)
1mm	150	12mm (0.47")	1.8m (5.9ft)
1mm	150	15mm (0.59")	2.25m (7.38ft)
1mm	150	20mm (0.79")	3m (9.84ft)
1.5mm	50	12mm (0.47")	0.6m (1.97ft)
1.5mm	50	15mm (0.59")	0.75m (2.46ft)
1.5mm	50	20mm (0.79")	1m (3.28ft)

Light Wands - 14mm (0.55") diameter. With a 30mm or 12.5mm mini common end

Fibre	Max. Tails	Centres	Max. Length
0.75mm	120	12mm (0.47")	1.44m (4.72ft)
0.75mm	120	15mm (0.59")	1.8m (5.9ft)
0.75mm	120	20mm (0.79")	2.4m (7.87ft)

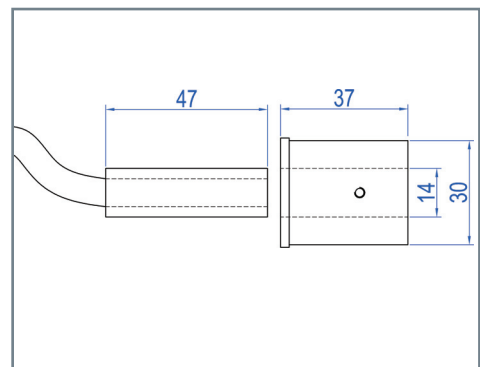
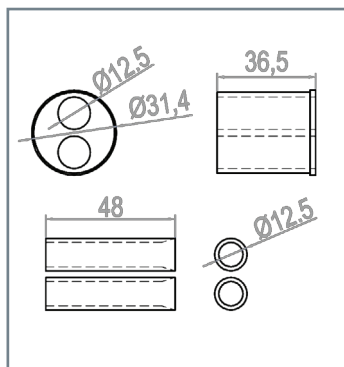
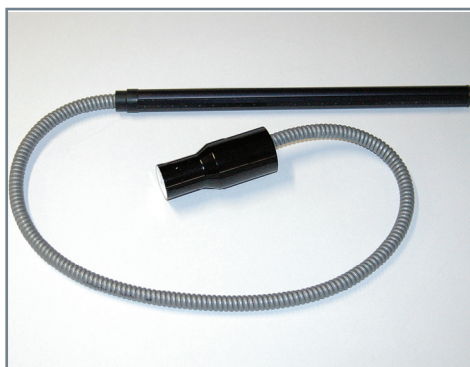


Light Wands 20mm (0.79") diameter. With 12.5mm mini common end (max. 3 wands per light source)

Fibre	Max. Tails	Centres	Max. Length
0.75mm	156	12mm (0.47")	1.87m (6.13ft)
0.75mm	156	15mm (0.59")	2.34m (7.68ft)
0.75mm	156	20mm (0.79")	3.12m (10.24ft)
1mm	85	12mm (0.47")	1.02m (3.35ft)
1mm	85	15mm (0.59")	1.27m (4.17ft)
1mm	85	20mm (0.79")	1.70m (5.58ft)
1.5mm	36	12mm (0.47")	0.43m (1.41ft)
1.5mm	36	15mm (0.59")	0.54m (1.77ft)
1.5mm	36	20mm (0.79")	0.72m (2.36ft)

Light Wands 20mm (0.79") diameter. With 14mm mini common end (max. 1 wand per light source)

Fibre	Max. Tails	Centres	Max. Length
0.75mm	198	12mm (0.47")	2.37m (7.77ft)
0.75mm	198	15mm (0.59")	2.97m (9.74ft)
0.75mm	198	20mm (0.79")	3.96m (12.99ft)
1mm	115	12mm (0.47")	1.38m (4.53ft)
1mm	115	15mm (0.59")	1.72m (5.64ft)
1mm	115	20mm (0.79")	2.30m (7.55ft)
1.5mm	46	12mm (0.47")	0.55m (1.80ft)
1.5mm	46	15mm (0.59")	0.69m (2.26ft)
1.5mm	46	20mm (0.79")	0.92m (3.02ft)



Note that drawing dimensions are shown in mm

