

PRODUCT SPECIFICATION SHEET



Rev. C2

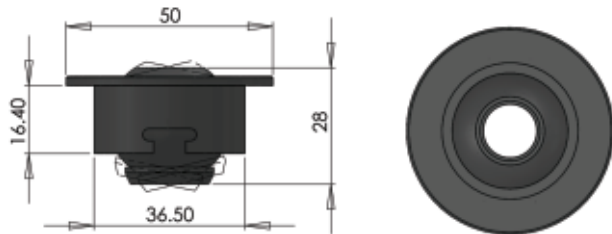
UFO 11D Downlight



An adjustable recessed downlight fitting, secured through ceiling with spring clips.

Available in a range of finishes, this fitting can be rotated and tilted to point directly at any objects to be illuminated. The fitting also allows for the light beam to be focused. The fitting is also suitable for mounting in the base of a display case and illuminating upwards.

Our downlight fittings are suitable for use in a variety of different applications and are the ideal solution for the illumination of static objects within a display case or cabinet.



Note that all dimensions are displayed in mm



TECHNICAL INFORMATION

| | |
|--------------------|---|
| Lens | 18mm (0.7") lens |
| Focus range | 30° - 50° |
| Material | Aluminum, stainless steel or polycarbonate/ABS |
| Finishes available | Aluminum, stainless steel, chrome, black, white |
| Flange size | ø50 (ø1.96") |
| Tilt | 20° |
| Rotation | 360° |
| Weight | Aluminum; 47.1g (0.1lb) Polycarbonate; 21.9g (0.05lb) |
| Mounting hole size | 40mm (1.6") |
| Mounting | Recessed, held by springs |
| Ferrule size | M10 or 8mm smooth |
| Min. fiber size | 2mm |
| Max. fiber size | 8mm |

ORDERING CODES

| MODEL | MATERIAL | | FINISH | | FERRULE SIZE | |
|---------|-----------------|-----|-----------------|-----|--------------|-----|
| | | | | | | |
| UFO 11D | Aluminum | ALU | Aluminum | ALU | M10 | M10 |
| | Stainless Steel | SS | Stainless Steel | SS | 8mm | 8mm |
| | Polycarbonate | PC | Chrome | CH | | |
| | | | Black | BL | | |
| | | | White | WH | | |
| UFO 11D | | | | | | |