



Product Overview

A mini adjustable downlight fitting with trumpet which is primarily used in our range of light bar systems and mounting extrusions. Available in a range of finishes, this fitting can be rotated and tilted to point directly at any objects to be illuminated. The fitting also allows for the light beam to be focused.

The 34D is available with two trumpet options - see drawing below for details.

Our downlight fittings are suitable for use in a variety of different applications and are the ideal solution for the illumination of static objects within a display case or cabinet.

Uses include:

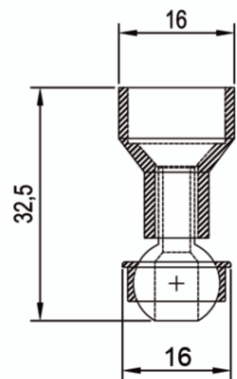
- Museum and gallery cabinet and display lighting
- Accentuation of pictures and other objects
- Illumination of shop displays

Technical Information

Lens	Clear focusing lens
Material	Acrylic
Finish	Black as standard
Flange size	ø16mm
Weight	UFO34DA: 3.2g UFO34DB: 5.5g
Overall tilt	60°
Rotate	360°
Beam angles	UFO 34DA: 20° - 30° UFO 34DB: 55° - 60°
Mounting hole size	14mm
Ferrules size	Custom ferrule
Min. fiber size	1mm
Max. fiber size	3mm



UFO34DA



UFO34DB

