

PRODUCT SPECIFICATION SHEET



Rev. C3

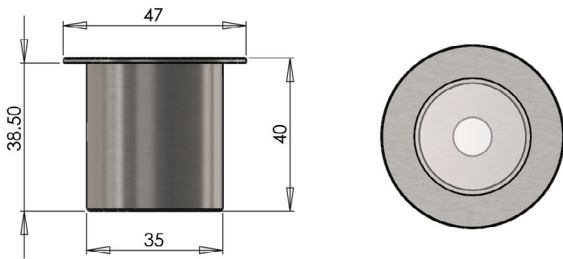
LP4 LED Paver



Large LED paver fitting. Available in either stainless steel or hard anodised aluminum.

As one of our large pavers, the LP4 is well placed for providing mood enhancing lighting in indoor and outdoor areas. With a flush bezel measuring 47mm (1.85") in diameter and a recess depth of 38.5mm (1.5").

It can be specified with full dimming capabilities when used in conjunction with a UFO approved dimmer switch. This allows you to adjust the intensity of the light to compliment the objects and areas on display.



Note that all dimensions are shown in mm



TECHNICAL INFORMATION

Illuminator	LED
Operating Environment	Outdoor
Material	Stainless steel or hard anodised aluminum
Finishes	Hard Anodised: Black, silver, custom RAL Stainless Steel: Natural
Mounting Hole Size	36mm (1.4")
Power Consumption	1W per fitting
Voltage	3.2V nominal
Color Temp. & CRI	3000K - 97CRI (typical) / 4000K - 95CRI (typical)
Typical Luminous Flux (based on 15° lens)	3000K: 50lm/W / 4000K: 51lm/W
Glass	Frosted glass front

DRIVER CONTROL OPTIONS (Depending on specified driver)

No Dimming	Local Potentiometer Dimming
0-10V Dimming	Remote Potentiometer Dimming

PRODUCT CODES

MODEL	OPTICS	COLOR TEMP	MATERIAL	FINISH
UFO LP4	None NL	3000K 30	Stainless Steel SS	Black BL
		4000K 40	Hard Anodised HA	Silver SV
				No color NC
				Custom CU



e.g, UFO LP4-NL-30-SS-BL

