

PRODUCT SPECIFICATION SHEET



Rev. C3

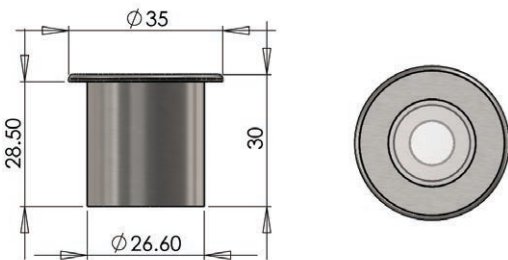
LP7 LED Paver



Small LED paver fitting. Available in either stainless steel or hard anodised aluminum.

At just 35mm (1.4") in diameter, this is one of the smaller LED pavers in our range. It comes with a warm white or neutral white LED light and a frosted glass front to provide a soft wash of light across indoor and outdoor spaces.

Multiple methods of dimming are supported including 1-10v and mains dimming when used with a UFO approved dimmer.



Note that all dimensions are shown in mm



TECHNICAL INFORMATION

Illuminator	LED
Operating Environment	Outdoor
Material	Stainless steel or hard anodised aluminum
Finishes	Black, silver, custom RAL to order
Mounting Hole Size	28mm (1.1")
Power Consumption	1W per fitting
Voltage	3.2V nominal
Color Temp. & CRI	3000K - 98CRI (typical) / 4000K - 96CRI (typical)
Typical Luminous Flux (based on 15° lens)	3000K: 68lm/W / 4000K: 72lm/W
Glass	Frosted glass front

DRIVER CONTROL OPTIONS (Depending on specified driver)

No Dimming	Local Potentiometer Dimming
0-10V Dimming	Remote Potentiometer Dimming

PRODUCT CODES

MODEL	OPTICS	COLOR TEMP	MATERIAL	FINISH
UFO LP7	15° 15	3000K 30	Stainless Steel SS	Black BL
	51° 51	4000K 40	Hard Anodised HA	Silver SV
				No color NC
				Custom CU

UFO LP7				
---------	--	--	--	--

e.g. UFO LP7-15-30-SS-BL

