

PRODUCT SPECIFICATION SHEET



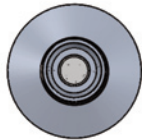
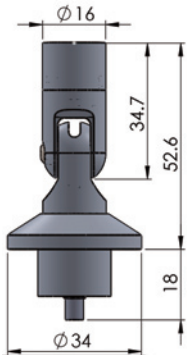
Rev. C4

LPV1 LED Downlight



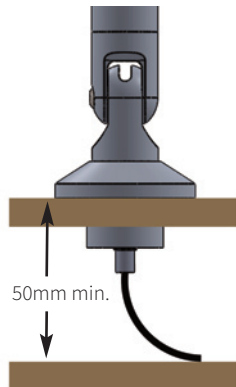
Surface mount LED downlight fitting with free rotation and tilt. The UFO LPV1 fitting features a sleek design and 360° rotation with 90° + 45° articulation in the pivot.

Available in a choice of color temperatures with high color rendition and a selection of optics, the fitting can be used to provide contemporary, functional lighting in any environment. The fitting has an inbuilt plug/socket and can be easily removed from its base.



Installation Note:

A minimum gap of 50mm (2") is required from the top of the dress board to allow for the cable bend radius.



TECHNICAL INFORMATION

Color Temperatures	2700K, 3000K, 4000K
Typical CRI Values	>96CRI (3000K) >95CRI (2700K & 4000K)
Power Consumption	350mA (1.12W) 500mA (1.6W)
Voltage	3.2V nominal
Lumens per Watt	2700K: 75lm/W - 3000K: 77lm/W 4000K: 80lm/W
Lens Options	16° / 23° / 36° / 61°
Material	Aluminum
Finishes	Black or silver
Articulation	Tilt: 90°+45° / Rotation: 360°

DRIVER CONTROL OPTIONS (Depending on specified driver)

No Dimming	Local Potentiometer Dimming
0-10V Dimming	Remote Potentiometer Dimming

PRODUCT ORDERING CODES

MODEL	OPTICS		COLOR TEMP		FLANGE COLOR	
UFO LPV1	16°	16	2700K	27	Black	BL
	23°	23	3000K	30	Silver	SV
	36°	36	4000K	40		
	61°	61				

UFO LPV1 - [] - [] - []
e.g. UFO LPV1-16-30-BL

