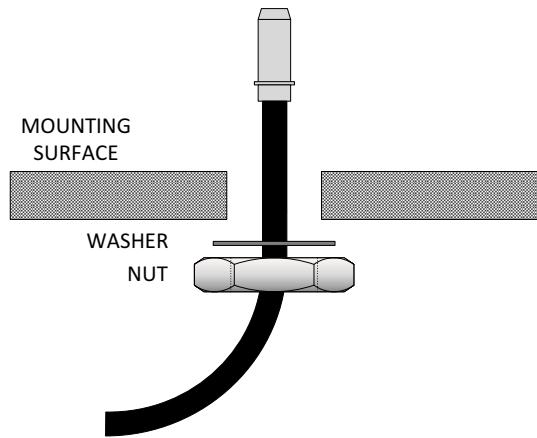
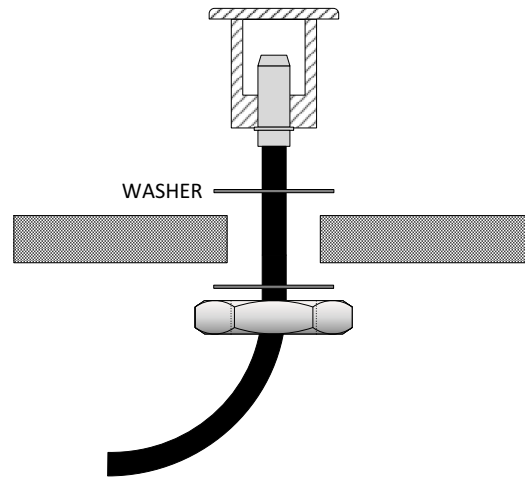


FIBRE OPTIC P17T PAVER FITTING GUIDE



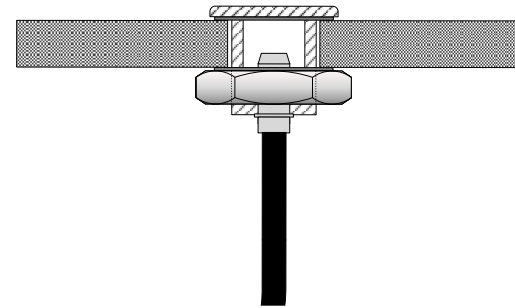
Hold the fibre optic tail and thread it through the nut, 1 off the plastic washers and the mounting surface.

1



On the other side of the mounting surface, thread the fibre tail through the other plastic washer and screw on the paver fitting.

2



Securely tighten the locking nut onto the paver.

3

HOLE CUTOUT SIZE

P17T \varnothing 17mm / 0.67"

Note that this guide is indicative only. Installation of these fittings is dependant on the surface they are being installed in and local environmental conditions.

find us online: [uk]www.ufo.lighting

[usa]www.fiberopticlighting.com

[de]www.ufo-licht.de